

STRAIGHT FROM THE **HEARTLAND**

2020 - 2021



ROW UNIT SELECTION GUIDE

800-798-1968

SHIELDAG.COM



Quality Agricultural Equipment

Manufacturers of:

V-Blades • Sweeps • Chisels & Spikes • Disc Blades • Drill Discs & Hoe Drill Points
Related Tillage & Planting Hardware • Fertilizer Knives • Shanks • Coulter Blades • Crop Savers
Precision Planting Equipment • Conservation Ripper Points • Strip Till Points • Fertilizer Row Units

Distributors of:

Belted Grain & Fertilizer Conveyors • Salt & Material Handling Conveyors • Seed Handling Equipment
Round Baler Belting • Milo Guards & Crop Savers

President

Mike Bergmeier – Ext. 301
Email: mjbergmeier@shieldag.com

Vice President

Angie Bergmeier – Ext. 311
Email: acbergmeier@shieldag.com

Sales Manager

Andy Klamm – Ext. 305
Cell: 620-720-8630
Email: adklamm@shieldag.com

Office

General Manager/Engineer
Logan Hurlbut – Ext. 315
Email: lhurlbut@shieldag.com

Inside Sales
Paul Ehler – Ext. 303
Cell: 620-728-8617
Email: prehler@shieldag.com

Accounting/Parts Department
Iris Devena – Ext. 308
Email: iddevena@shieldag.com

Shipping
Brenda Klug – Ext. 304
Email: shipping@shieldag.com

Warranty

Shield Agricultural Equipment (ShieldAg) and Acra-Plant warrant our products to be free of defects in materials and workmanship for a period of 180 days after the date of end user (consumer) purchase from the dealer. The warranty for whole goods equipment shall be exactly the warranty offered on these products by the original equipment manufacturer, and their individual warranties shall replace this warranty. This warranty does not apply to item(s), equipment or component parts that are found to have been subject to abuse or inadequate maintenance, that have been altered in any way or that have been used beyond their advertised capacity, rating or intended use. This warranty shall be for the repair or replacement of the defective item(s) at the sole discretion of Shield Agricultural Equipment. Any warranty replacement or repairs shall be subject to pro-rated consumer usage deductions as outlined below. Any warranty on tillage items expires after 1/2" of edge wear has occurred. Chrome products are warranted for defects in material and workmanship only, and the pro-rating system and 1/2" edge wear rule does not apply to chrome products. Chrome products are not guaranteed for use in rocky or frozen ground. This warranty does not extend to labor incurred in removal or replacement of any item(s). ShieldAg shall not be liable for incidental or consequential damages arising out of the use or inability to use the item(s) for any purpose whatsoever.

Execution of consumer rights for warranty repair or replacement:

1. Consumer must provide the dealer with evidence of date of purchase of the item(s) to be considered for warranty. This evidence shall be in the form of a copy of the invoice or bill of sale for the item(s) and this evidence shall accompany the item(s) alleged to be defective.
2. The dealer shall provide ShieldAg with #1, above, and with a copy of the ShieldAg invoice to the dealer for the same item(s).
3. The ShieldAg Territory Manager or the dealer shall complete a ShieldAg Returned Goods Authorization (RGA) for the item(s) alleged to be defective. It is the dealer's responsibility to return the item(s) to ShieldAg at the dealer's expense; however, the Territory Manager may elect to return the item(s) to ShieldAg via our truck. Extension of this courtesy does not constitute the final decision to authorize warranty replacement or repair for the item(s).
4. Upon receipt of the item(s) alleged to be defective and the RGA, the ShieldAg engineering department will inspect the item(s). The engineering department will have sole discretion to authorize warranty replacement or repair.
5. ShieldAg engineering department shall assign the pro-rated wear factors to all item(s) subject to a warranty claim. Since the range of item(s) varies widely, the assignment of pro-rated wear factor deductions shall be done in good faith, working with the ShieldAg Territory Manager, the dealer and the consumer. In general, warranty will be pro-rated for wear up to 1/2" of edge wear on the item(s). Any warranty on tillage items expires after 1/2" of edge wear has occurred. The pro-rating system and 1/2" edge wear rule does not apply to chrome products.
6. ShieldAg will at its sole discretion replace or repair the item(s) found to be defective, less the pro-rated wear factors. ShieldAg will return the item(s) that have been repaired or replaced to the dealer including free return transportation via the mode of our choice.

Notes on Implied Warranties and Limitations

There is no implied warranty of merchantability or fitness for a particular purpose. Some states do not allow limitations on implied warranties of merchantability or fitness for a particular purpose, so this limitation may not apply in a given state. Some states do not allow the exclusion or limitation of incidental or consequential damages, so this limitation may not apply in a given state.

Shipments & Returns

This "Shipments and Returns Policy" outlines the rights and obligations of Shield Agricultural Equipment (ShieldAg) dealers with regards to discrepancies in shipments and returns of unsold items to ShieldAg.

Shipments

ShieldAg must be informed of any shortages in shipments within ten (10) days of the arrival of that shipment or shipments at the dealer or end user (in the case of drop-shipments from ShieldAg to the end user). Shortages for truck shipments via LTL, UPS or other common carrier should be forwarded to the carrier for adjustment via freight claim. Shortages deemed by ShieldAg corporate office or our Territory Managers to be our responsibility will be corrected through a credit on the account of the dealer or through replacement of the item(s) that were missing from the shipment. It is the sole responsibility of the dealer to count the item(s) received on shipments and to make appropriate claims for shortages within ten (10) days of the receipt of the item(s).

Execution of dealer rights for shipments:

1. Dealer shall provide ShieldAg with a copy of the ShieldAg packing slip (pick list) highlighting the item(s) that were alleged to be missing. A copy of the packing slip is to be faxed or mailed to ShieldAg within ten (10) days of the receipt of the shipment.
2. The ShieldAg Territory Manager may at our discretion be asked to visit the dealer and examine the shipment and shortage prior to extending credit or replacing the items.
3. ShieldAg will at its sole discretion replace the missing item(s) or credit the dealer account for the net dealer cost of the item(s) found to be missing. If replaced, ShieldAg will replace the missing item(s) to the dealer including free return transportation via the mode of our choice.

Returns

ShieldAg does not have any types of oral or written agreements, contracts or arrangements of any type, between ShieldAg and our dealers or distributors that provide for the rights and obligations of the parties with respect to the purchase or sale of equipment or repair parts, beyond the standard obligations created by purchase orders and acceptance of same, for ShieldAg parts. ShieldAg therefore does not fall under any state's "buy back" laws. ShieldAg will not allow returns for any items purchased as "special order" or non-standard as modified for a custom application. ShieldAg will accept the return of standard-stocked new item(s) originally purchased into dealer or distributor stock from ShieldAg for a period of two (2) years from the date of original purchase from ShieldAg. All items returned must be current to the stream of commerce and not deemed to be obsolete. Returned item(s) in new and merchantable condition shall be subject to a thirty percent (30%) restocking charge. Any item(s) requiring rework, repackaging or repainting will be accepted only with a revised (and increased) restock charge after inspection at ShieldAg.

Execution of dealer or distributor rights for returned goods:

1. Dealer or distributor shall provide ShieldAg with a copy of the original invoice for the item(s) to be returned and a written explanation of the reason for return.
2. The ShieldAg inside salesperson or territory manager will work with the dealer or distributor to complete a ShieldAg Returned Materials Authorization (RMA), also known in the industry as an RGA (Returned Goods Authorization) for the item(s) to be returned. Upon inspection of the original invoice and the written explanation for return, the ShieldAg Inside salesperson or territory manager will authorize return of the item(s) for inspection and subsequent credit. It is the dealer's responsibility to return the item(s) to ShieldAg at the dealer's expense. Receipt of items does not constitute the final decision to extend returned goods credit for the item(s).
3. Upon receipt of the item(s) and the completed RMA (RGA), ShieldAg will inspect the items for merchantability and general condition. Credit on account will only be applied after the items have been inspected and accepted. Credit against the dealer or distributor account receivable will be applied less the thirty percent (30%) restocking charge. There will be no cash refunds for returned items. The ShieldAg territory manager or inside salesperson will communicate (to the dealer or distributor) acceptance (or rejection) of the returned goods and the final credit amount.
4. This Policy dated 12/01/2020 supersedes all previous written or oral Returned Goods policies.

Shield Bar Size	Liquid or NH3	Manufacturer	Bar Size Vertical	(inches) Horizontal	Applicator notes
6X4	LIQ	Dalton	6	4	dual gang, 12 coulters
6X4	NH3	Dalton	6	4	DW3000, DW6000-series

Bar Size		Manufacturer	Bar Size Vertical	(inches) Horizontal	Applicator notes
4X4	LIQ	DMI/CNH	4	4	small bar
6X4	LIQ	DMI/CNH	6	4	large bar (NPX 2800)
6X4	NH3	DMI/CNH	6	4	3000-series
6X4	NH3	DMI/CNH	6	4	4000-series
6X4	NH3	DMI/CNH	6	4	5000-series & NPX 5300

Bar Size		Manufacturer	Bar Size Vertical	(inches) Horizontal	Applicator notes
7X7	LIQ	Blu-Jet	7	7	AT 3000
6X6	NH3	Blu-Jet	6	6	AT 5000
4X6	NH3	Blu-Jet	4	6	Land Runner
6X6	NH3	Blu-Jet	6	6	AT 6010

Bar Size		Manufacturer	Bar Size Vertical	(inches) Horizontal	Applicator notes
7X7	LIQ	Progressive	7	7	2500 & 2450
5X7	NH3	Progressive	5	7	1300

Bar Size		Manufacturer	Bar Size Vertical	(inches) Horizontal	Applicator notes
7X7	LIQ	Fast Distr.	7	7	8100 main frame
7X5	LIQ	Fast Distr.	7	5	8100 flip wings
6X4	LIQ	Fast Distr.	6	4	8129 twin gang

Bar Size		Manufacturer	Bar Size Vertical	(inches) Horizontal	Applicator notes
6X4	LIQ	Schaben	6	4	LA9000 liquid

Bar Size		Manufacturer	Bar Size Vertical	(inches) Horizontal	Applicator notes
7X4	LIQ	KBH	7	4	Liquid applicator

Bar Size		Manufacturer	Bar Size Vertical	(inches) Horizontal	Applicator notes
6X4	LIQ	Clark	6	4	N/A

Bar Size		Manufacturer	Bar Size Vertical	(inches) Horizontal	Applicator notes
4X6	LIQ	Ag Systems	4	6	6000-series
4X6	NH3	Ag Systems	4	6	7200 & 8000-series

Bar Size		Manufacturer	Bar Size Vertical	(inches) Horizontal	Applicator notes
6X4	LIQ	P & H Mfg.	6	4	2880
4X6	NH3	P & H Mfg.	4	6	2897

Note: ShieldAg uses ASAE standard tool bar sizing
VERTICAL first, Horizontal second: **DMI uses the opposite terminology**

For use with coultter arm and blade

Where customer needs to mount everything possible to one tool bar

Tool Bar size VERTICAL DIMENSION FIRST, HORIZONTAL DIMENSION SECOND

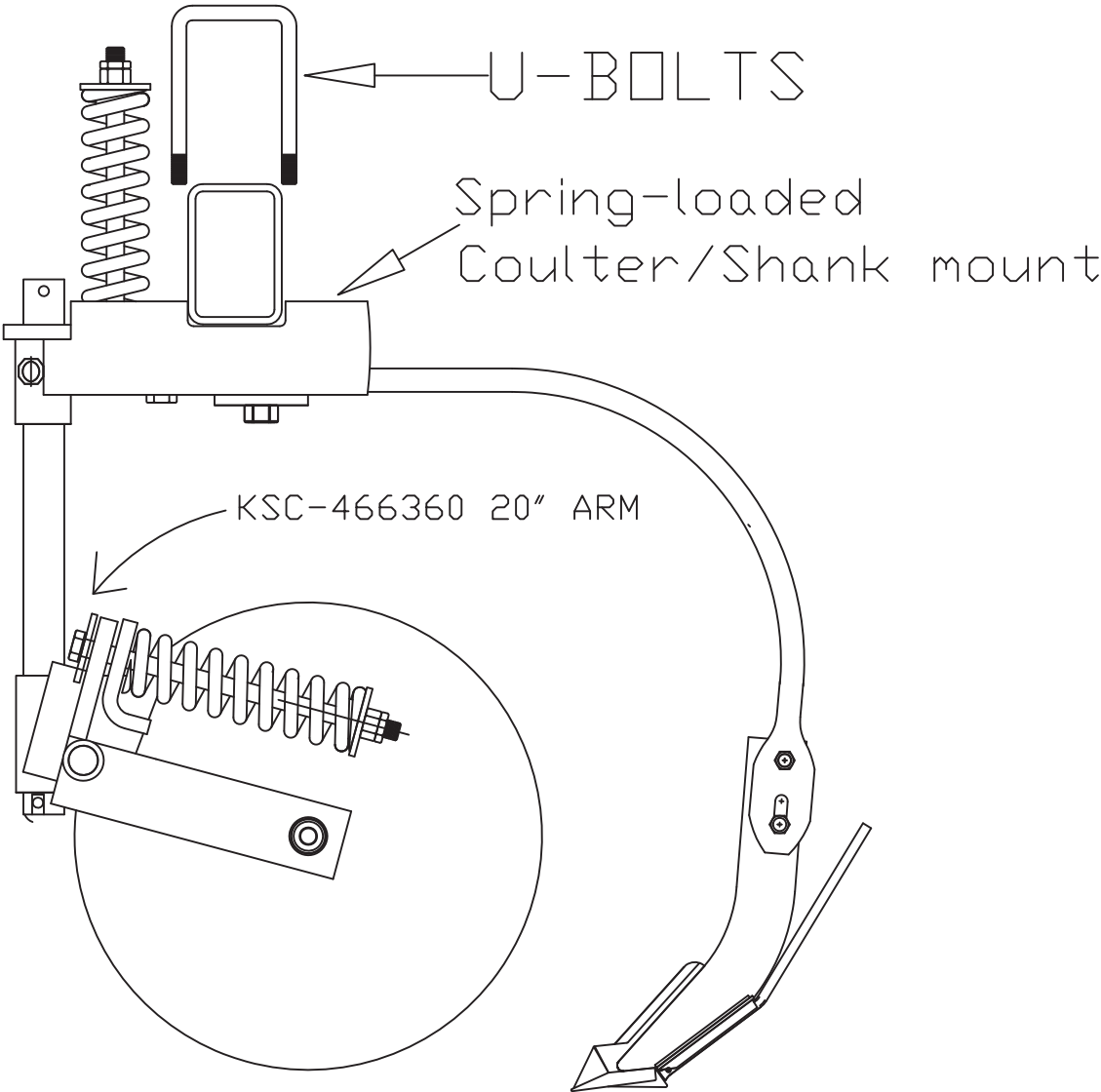
EXAMPLE 4 X 6 means 4" vertical X 6" horizontal

Bar size	Spring-loaded	Heavy-duty double spring	U-bolts	
Vert X Horiz	Coulter/Shank mount	Coulter/Shank mount	2 per row	20" Arm
4X4	KSC-466540	KSC-466540X	AP-500529	KSC-466360
6X4	KSC-466540	KSC-466540X	AP-505530	KSC-466360
4X6	KSC-466560	KSC-466560X	AP-505529	KSC-466360
6X6	KSC-466560	KSC-466560X	AP-505018	KSC-466360
5X5	KSC-466750	KSC-466750X	AP-500539	KSC-466360
5X7	KSC-466570	KSC-466570X	AP-500537	KSC-466360
7X7	KSC-466570	KSC-466570X	AP-500538	KSC-466360

CHOICE OF SHANK: KSC-1298, KSC-1298WP, KSC-1290, KSC-1295, KSC-1299

Bolt for bolting the shank to the clamp 106-E3 3/4-10 X 3" hex bolt grade 5

NOTE: KSC-466370 24" Coulter Arms are not designed for use with Single Toolbar CS Mounts



Shield Ag 800-798-1968

Single Tool Bar Mounting System for RIGID SHANK MOUNT

For use with coulter arm and blade

Where customer needs to mount everything possible to one tool bar

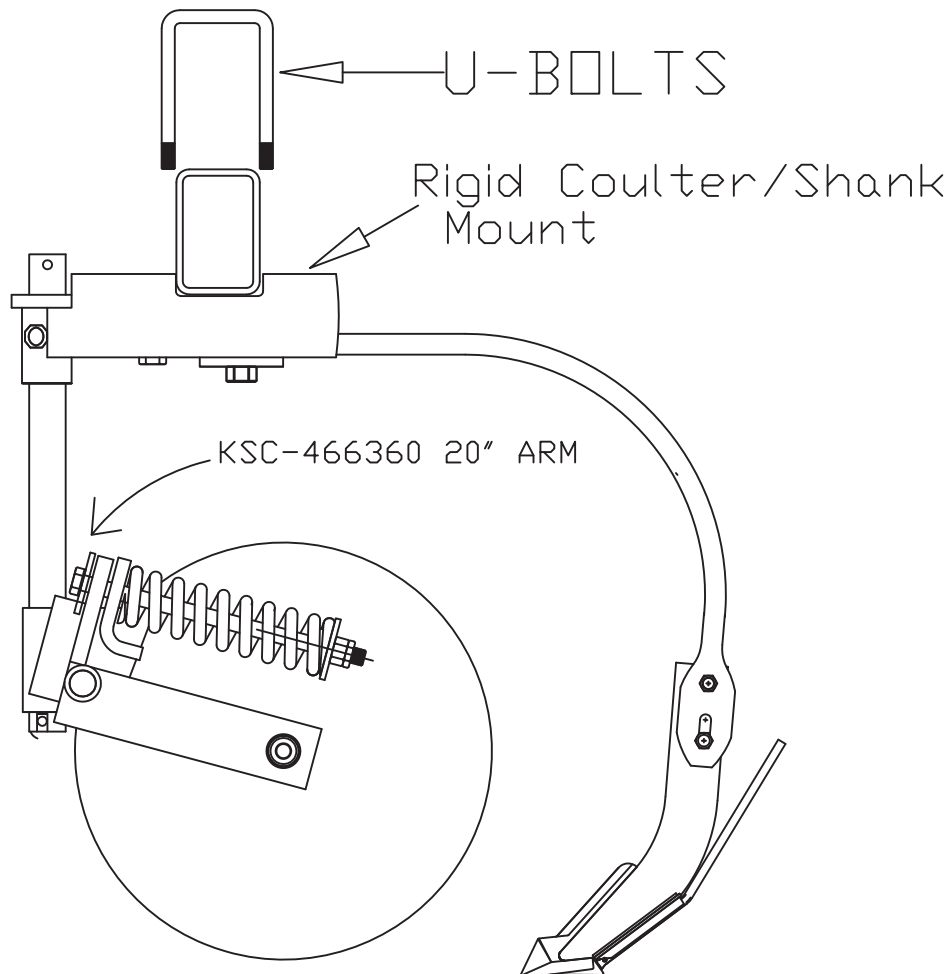
Tool Bar size VERTICAL DIMENSION FIRST, HORIZONTAL DIMENSION SECOND

EXAMPLE 4X6 means 4" vertical X 6" horizontal

Bar size Vert X Horiz	Rigid CS Mount Tool Bar Clamp	U-bolts 2 per row	20" Arm
4X4	KSC-466392	AP-500529	KSC-466360
6X4	KSC-466392	AP-505530	KSC-466360
4X6	KSC-466396	AP-505529	KSC-466360
4X6	KSC-466396-KSC95	AP-505529	KSC-466360
6X6	KSC-466396	AP-505018	KSC-466360
5X5	KSC-466751	AP-500539	KSC-466360
5X7	KSC-466397	AP-500537	KSC-466360
7X7	KSC-466397	AP-500538	KSC-466360

CHOICE OF SHANK: KSC-1298, KSC-1298WP, KSC-1290, KSC-1295, KSC-1299

Bolt for bolting the shank to the clamp 106-E3 3/4-10 X 3" hex bolt grade 5

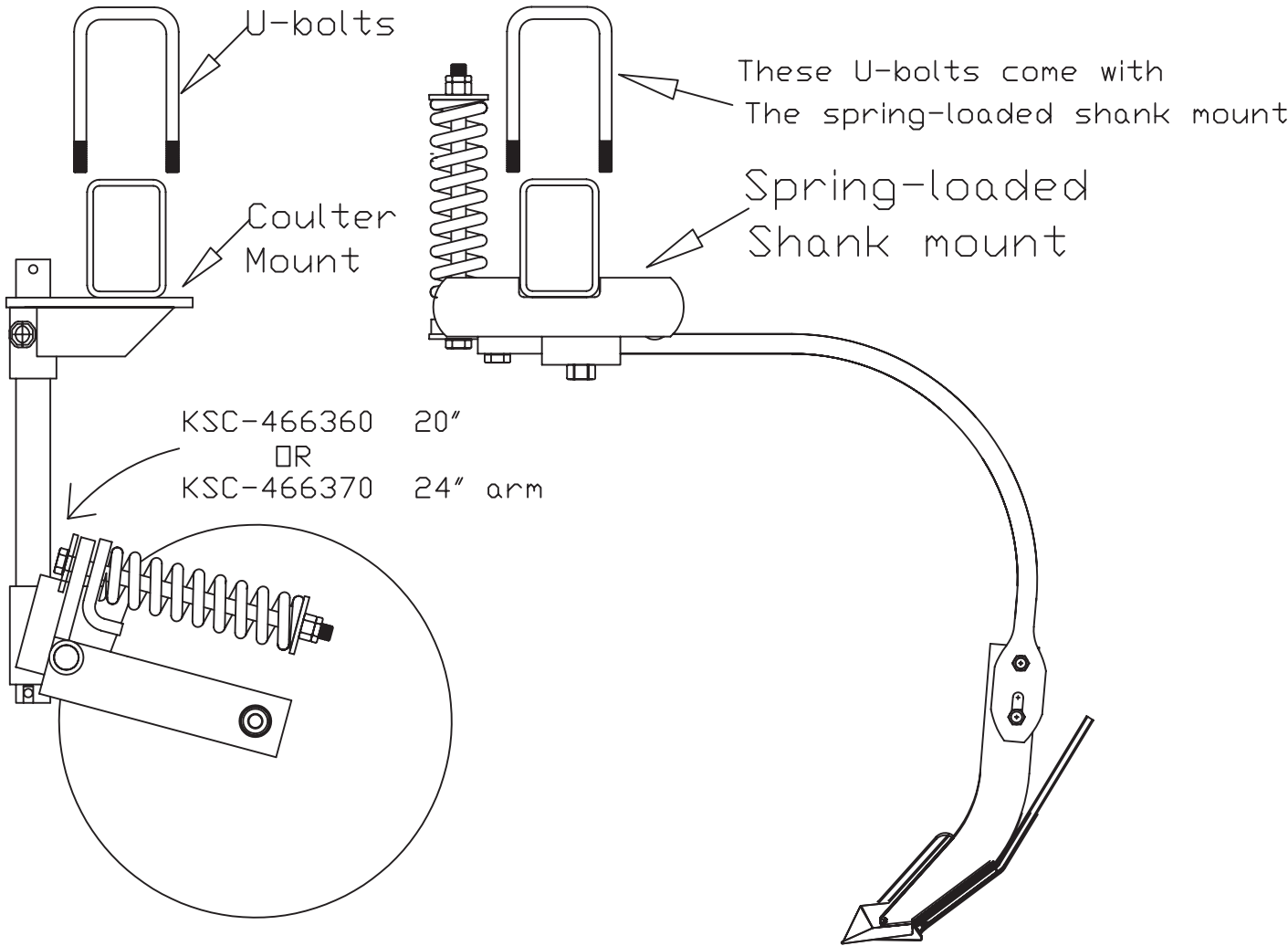


Double Tool Bar System (front bar and back bar) with SPRING BUNDLE shank mounts
Mount coulter system on Front bar
Mount Shanks on rear bar
Tool Bar size VERTICAL DIMENSION FIRST, HORIZONTAL DIMENSION SECOND
EXAMPLE 4 X 6 means 4" vertical X 6" horizontal

ShieldAg 800-798-1968

Bar Size Vert X Horiz	Coulter Mount On Front Bar	Front Bar U-bolts (quantity)	20" Arm	24" Arm	S-series clamps come with U-bolts	
					Standard Spring Bundle	Heavy-Duty Spring Bundle
6X2	KSC-466340S	AP-500534 (1)	KSC-466360	KSC-466370	N/A	N/A
4X4	KSC-466340S	AP-500531 (1)	KSC-466360	KSC-466370	S-1244SL	S-1244SLX
6X4	KSC-466340S	AP-500532 (1)	KSC-466360	KSC-466370	S-1264SL	S-1264SLX
4X6	KSC-466670	AP-505532 (2)	KSC-466360	KSC-466370	S-1246SL	S-1246SLX
6X6	KSC-466670	AP-500533 (2)	KSC-466360	KSC-466370	S-1266SL	S-1266SLX
5X7	KSC-466670	AP-500535 (2)	KSC-466360	KSC-466370	S-1257SL	S-1257SLX
5X5	KSC-466572	AP-505126 (2)	KSC-466360	KSC-466370	S-1255SL	S-1255SLX
7X7	KSC-466670	AP-510755 (2)	KSC-466360	KSC-466370	S-1277SL	S-1277SLX

CHOICE OF SHANK: KSC-1298, KSC-1298WP, KSC-1290, KSC-1295, KSC-1299
Bolt for bolting the shank to the clamp 106-E3 3/4-10 X 3" hex bolt grade 5



Mount coulter system on Front bar

Mount Shanks on rear bar using KSC-12 series clamps or Lollipop-style clamps

Tool Bar size VERTICAL DIMENSION FIRST, HORIZONTAL DIMENSION SECOND

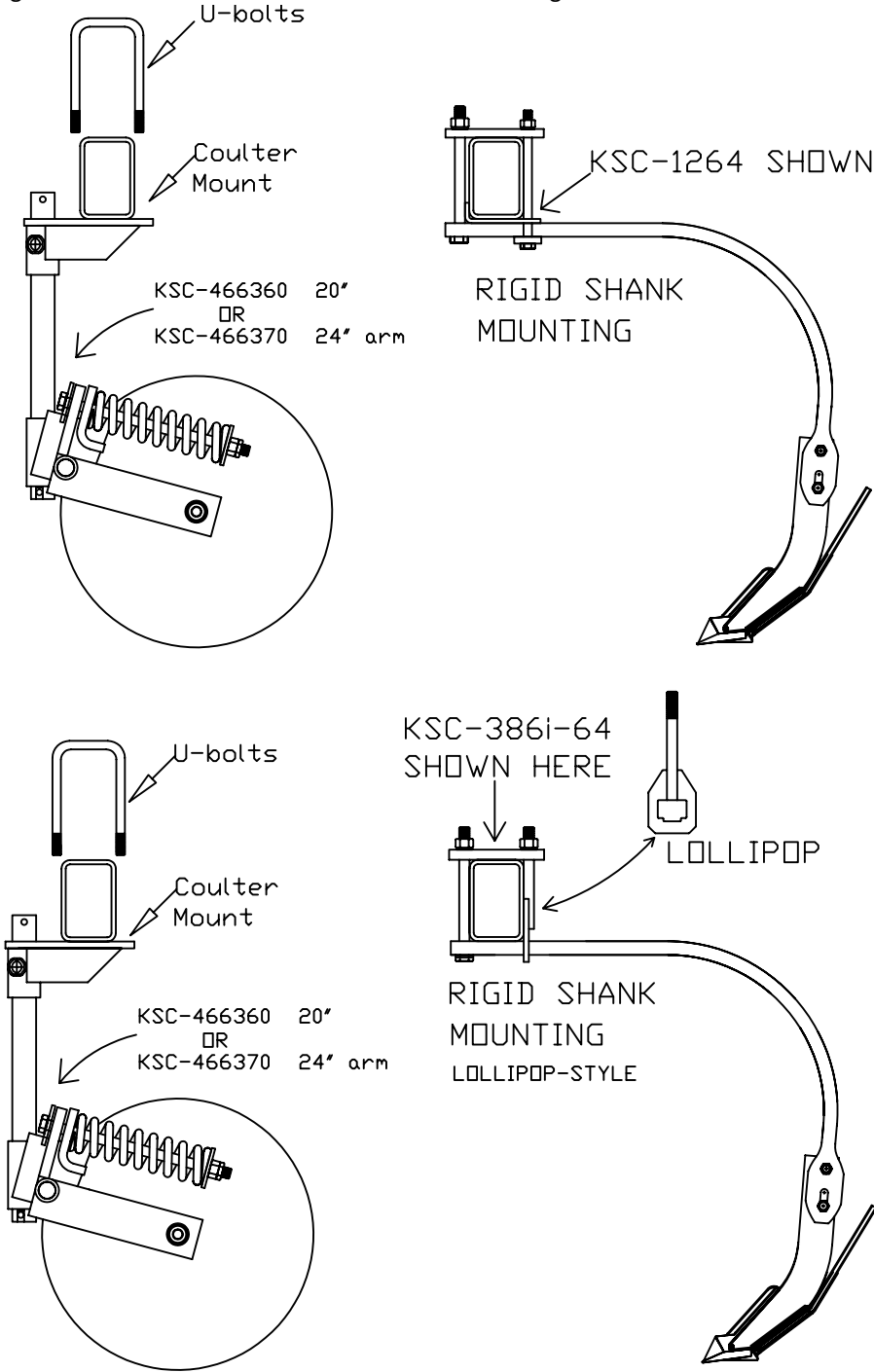
EXAMPLE 4 X 6 means 4" vertical X 6" horizontal

Bar Size		Coulter Mount	Front Bar		Rigid Mount	Lollipop
Vert X Horiz	On Front Bar	U-bolts (quantity)	20" Arm	24" Arm	Clamp Set	Clamp Set
6X2	KSC-466340S	AP-500534 (1)	KSC-466360	KSC-466370	KSC-1262	KSC-386i-62
4X4	KSC-466340S	AP-500531 (1)	KSC-466360	KSC-466370	KSC-1244	KSC-386i-44
6X4	KSC-466340S	AP-500532 (1)	KSC-466360	KSC-466370	KSC-1264	KSC-386i-64
4X6	KSC-466670	AP-505532 (2)	KSC-466360	KSC-466370	KSC-1246	KSC-386i-46
6X6	KSC-466670	AP-500533 (2)	KSC-466360	KSC-466370	KSC-1266	KSC-386i-66
5X7	KSC-466670	AP-500535 (2)	KSC-466360	KSC-466370	KSC-1257	KSC-384-57
5X5	KSC-466572	AP-505126(2)	KSC-466360	KSC-466370	KSC-1255	KSC-384-55
7X7	KSC-466670	AP-510755 (2)	KSC-466360	KSC-466370	KSC-1277	KSC-384-77

CHOICE OF SHANK: KSC-1298, KSC-1298WP, KSC-1290, KSC-1295, KSC-1299

Lollipop clamp sets listed include ONE lollipop and one bolt, with all hardware included

NOTE: Other Lollipop configurations and combinations available from ShieldAg



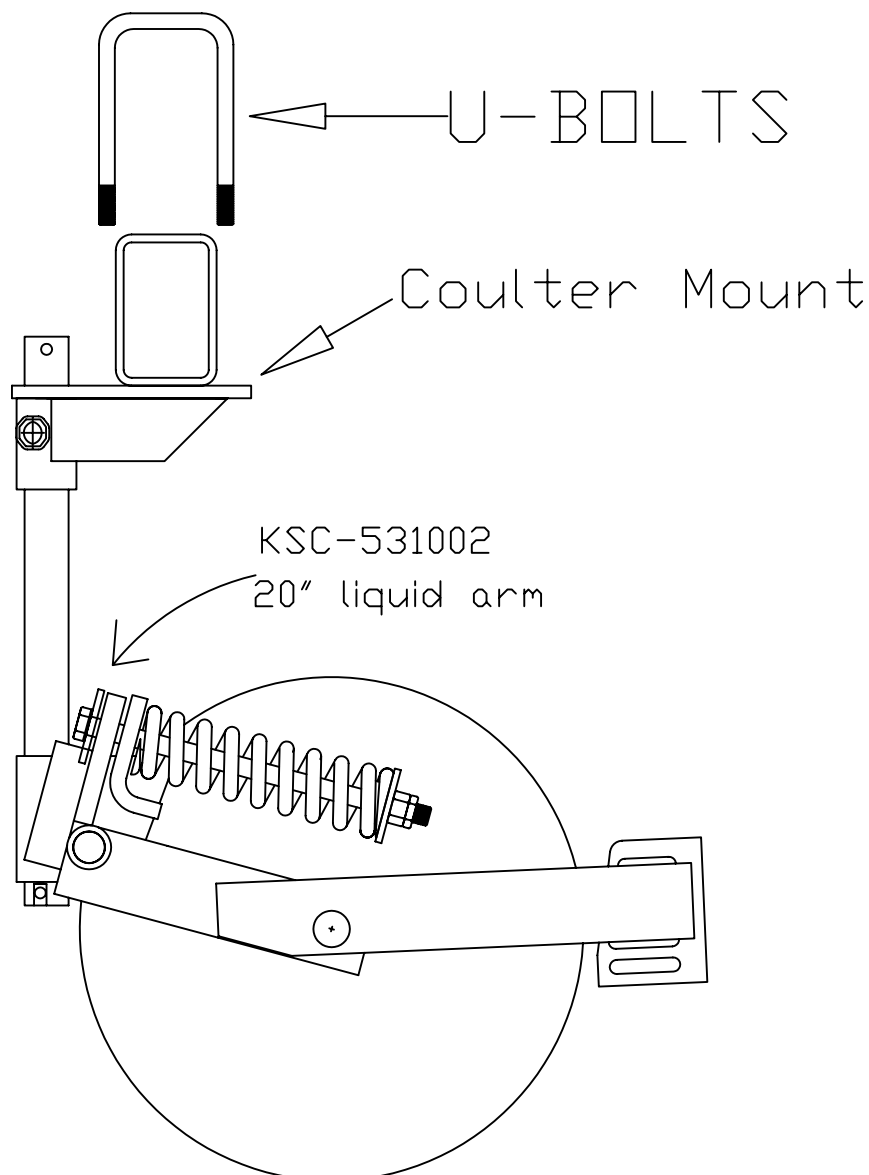
Single Bar LIQUID COULTER MOUNT

ShieldAG 800-798-1968

Tool Bar size VERTICAL DIMENSION FIRST, HORIZONTAL DIMENSION SECOND

EXAMPLE 4 X 6 means 4" vertical X 6" horizontal

Bar Size Vert X Horiz	Coulter Mount On Front Bar	Bar Mount U-bolts (quantity)	20" liquid Arm
6X2	KSC-466340S	AP-500534 (1)	KSC-531002
4X4	KSC-466340S	AP-500531 (1)	KSC-531002
6X4	KSC-466340S	AP-500532 (1)	KSC-531002
4X6	KSC-466670	AP-505532 (2)	KSC-531002
6X6	KSC-466670	AP-500533 (2)	KSC-531002
5X7	KSC-466670	AP-500535 (2)	KSC-531002
5X5	KSC-466572	AP-505126 (2)	KSC-531002
7X7	KSC-466670	AP-510755 (2)	KSC-531002



You can count on ShieldAg for any special application toolbar mount. These are just a few of the special mounting and shaft configurations available to make it easier for you to finish up a toolbar.



KSC-466340-4L (LEFT) and -4R (RIGHT)

- 4" offset mounts, moves coulters (vertical) shaft over 4" from centerline of mount
- For any application where you would be using KSC-466340S



KSC-466571-4L (LEFT) and -4R (RIGHT)

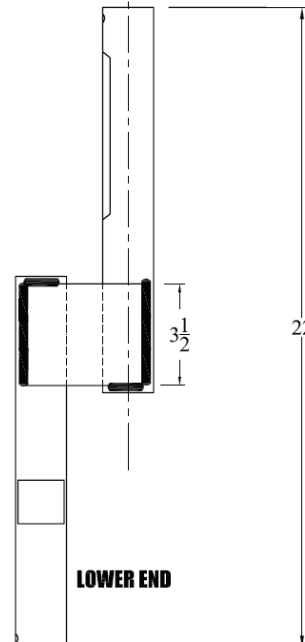
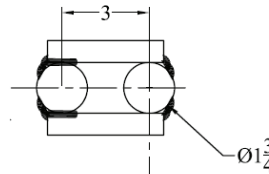
- 4" offset mounts, moves coulters (vertical) shaft over 4" from centerline of mount
- For any application where you would be using KSC-466670



KSC-466635 3-1/2" Diamond Bracket (typical on some planter toolbars)

- We also have KSC-466633 for 3" diamond bars and KSC-466644 for 4" diamond bars
- Offset shafts allow you to move the row unit another 3" left, right, front, or back

We also have special alloy high-strength shafts for extreme applications



ALL SHAFTS ARE OFFSET 3"

KSC-466316 OFFSET RIGHT
(SHOWN HERE)

KSC-466317 OFFSET LEFT

KSC-466313 OFFSET FRONT

KSC-466314 OFFSET REAR

COMES WITH:

KSC-466315-C COLLAR

and 2ea KSC-466360-RP716

7/16 X 3" spring pins

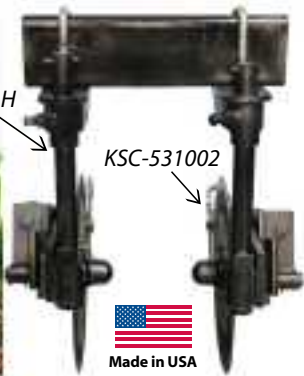
Extended mounts are also available to move the coultershaft out front of the toolbar, if you have a special configuration, call us or send us a hand-sketch and we'll probably have something that will work for you.

Hot Product

Left Hand Row Units KSC-531002LH

For these applications:

- Twin Row Corn
(applying fertilizer outside of both rows)
- Inter-Row Double Applicators
(2 applicators traveling between 30" or 36" rows)



Ask your territory manager for more details

(800) 798-1968

www.shieldag.com www.acraplant.com

PO Box 687 • Hutchinson, KS 67504-0687 • Fax (620) 662-7482

Shield Disc Sealer

For Ammonia (NH3) Toolbars

- Heavy-duty construction with greasable tapered roller bearings in all joints
- Extra holes and slots in the arms, allowing the user to “crowd the knife” or turn blades around backwards—any adjustment needed for different soil types or conditions
- “Stepped slots” in the blade hub allow for use of just about ANY sealer blade on the market today. Hub will accept any standard 3/8, 7/16 or 1/2” blade hole pattern, and any standard sealer blade up to 18” in diameter
- 3-mounting U-bolts to assure that the unit stays tight on the shank, and Shield stocks U-bolts for Shield shanks (1 X 2 or 1-1/4 X 2 shanks) or “edge-on” shanks
- Service parts IN-STOCK

Easy Ordering:

KSC-441100 Complete sealer, with 18” notched blades, for “flat way” shanks

KSC-441200 Complete sealer, with 18” notched blades, for “edge-bent” shanks

OR BUILD YOUR OWN:

- Upper and lower assembly
- U-bolts for your shank-style
- Blades of your choice and bolt kits to attach blades



*Multiple
blade
styles
available
to suit
your
needs!*



STRAIGHT FROM THE
HEARTLAND
FAVORITE US @ FARMTIME.COM

www.ShieldAg.com

(800) 798-1968

P O Box 687 • Hutchinson, KS 67504-0687 • Fax (620) 662-7482

Hot Product

From ShieldAg:

KSC-666460 Rolling Basket with CONVEX ("pumpkin") basket

KSC-666461 Rolling Basket with CONCAVE basket



For Strip-Till and Conventional Bars

- Installs on any 1 X 2 or 1-1/4 X 2 "Flat Way" shank
- Low-draft—unit just "trails" the shank without adding load
- Works in conjunction with any standard disc sealer system
- Smooth and form your berm for optimized wintering and spring planting
- Improves seed-to-soil contact during planting season
- Assists in sealing fertilizer products in the ground
- Choice of Berm-builder baskets—concave or convex, **YOUR CHOICE**
- Transport lock to minimize damage while roading



KSC-666460 with Convex "pumpkin" basket



Perfect Shaping and Soil Control!



Made in USA



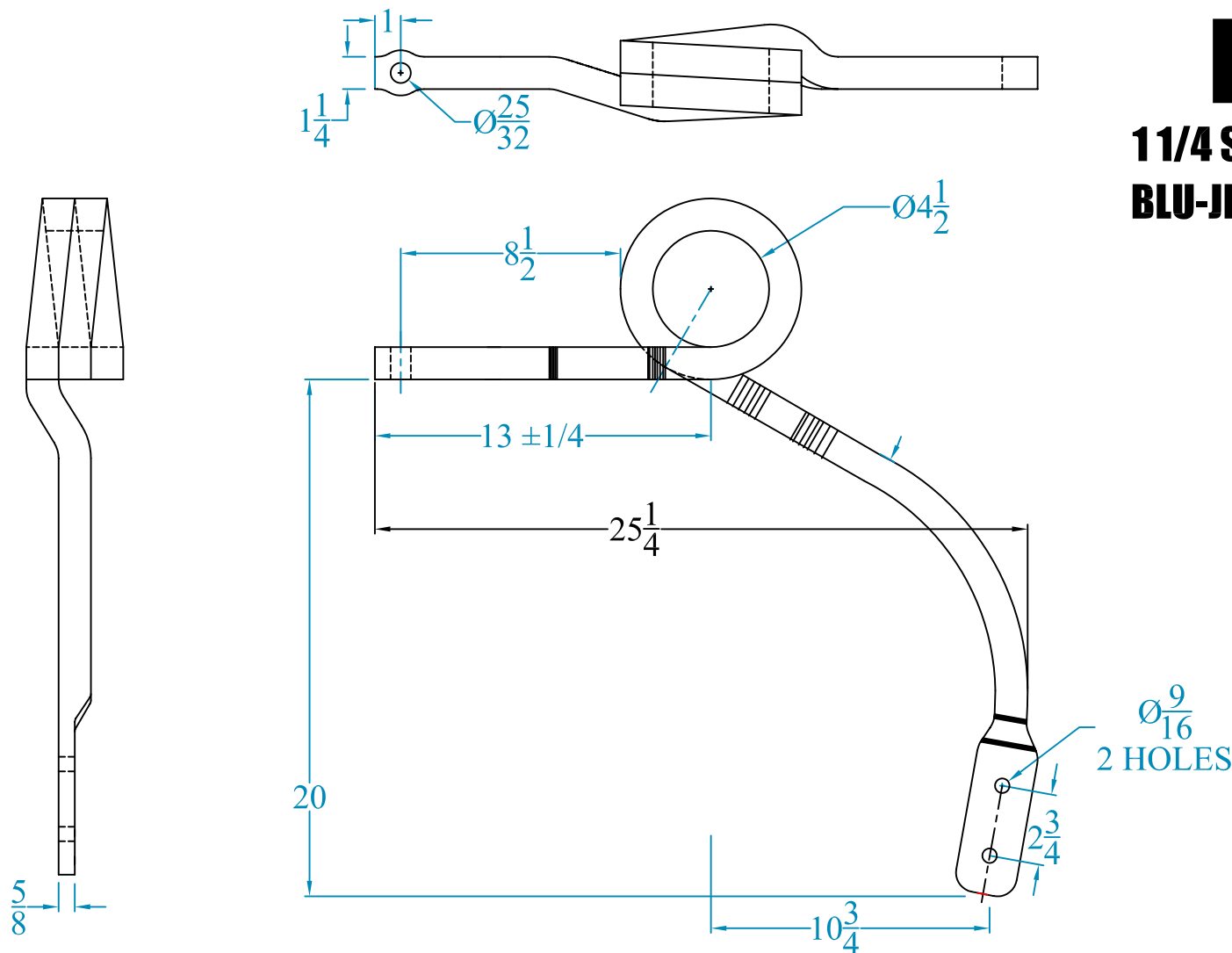
(800) 798-1968

www.shieldag.com

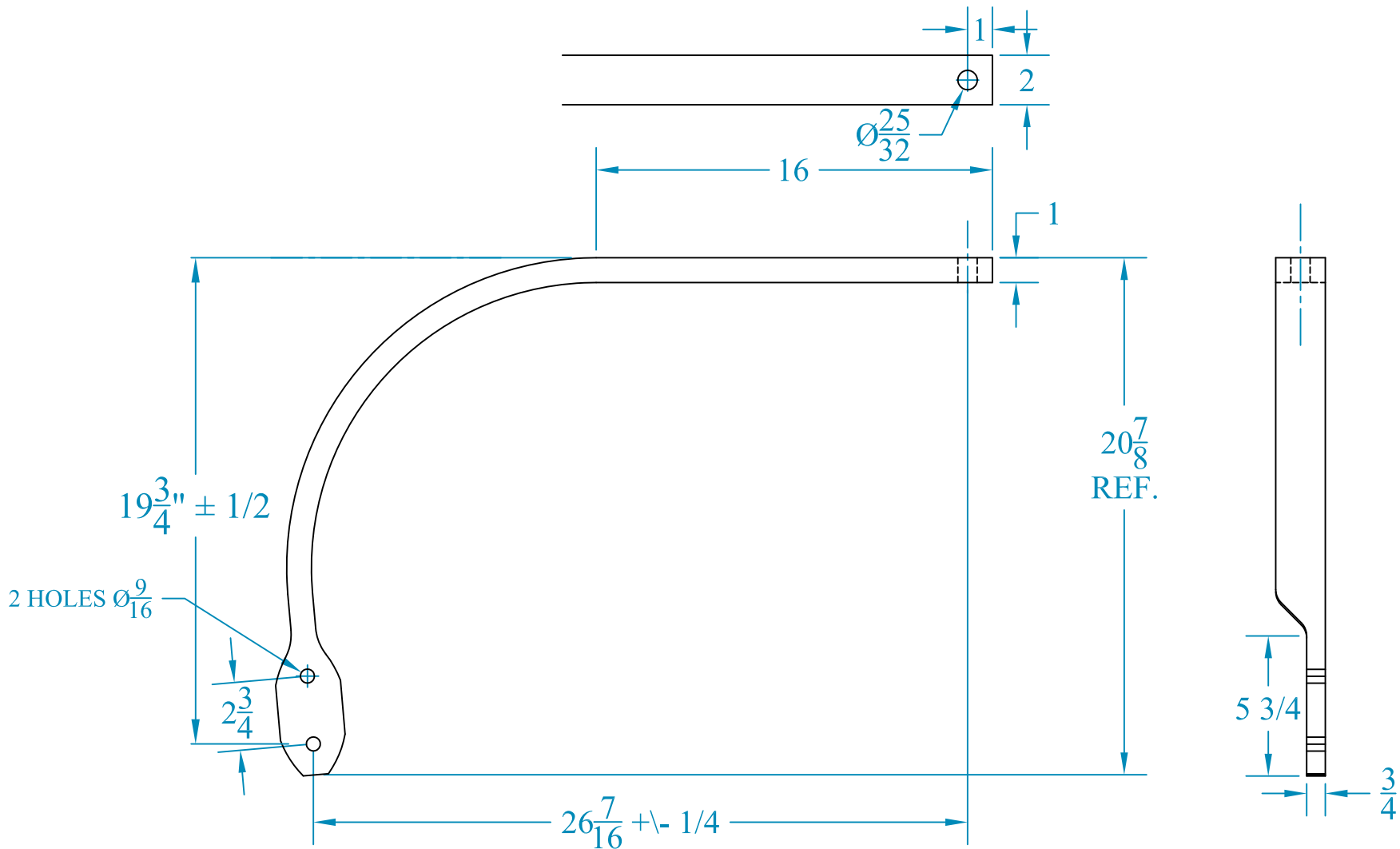
www.acraplant.com

KSC-95

1 1/4 SQUARE COIL SHANK
BLU-JET, Titan & others



-	-	-	-	TOLERANCE UNLESS OTHERWISE NOTED 0/0 +/- .06 0.00 +/- .020 0.000 +/- .005 0.0000 +/- .001 ANGLE +/- 1	SHIELD AGRICULTURAL EQUIPMENT	
-	-	-	-			
-	-	-	-		DRAWN BY: SHORES	DATE: 2\23\09
-	-	-	-		CHECKED BY: -	DATE: -
REV.	BY	DATE	DESCRIPTION	MATERIAL	PART NO.	REV.
			TITAN/BLUE-JET 1-1/4 SQUARE SHANK	1 1/4 SQ. 5160 HR BAR	KSC-95	-



KSC-1298

NC

**TOLERANCE UNLESS
OTHERWISE NOTED**

0/0 +/- .06

0.00 +/- .020

0.000 +/- .005

0.0000 +/- .001

ANGLE +/- 1

SHIELD
AGRICULTURAL EQUIPMENT

DRAWN BY: HURLBUT

DATE: 7/14/11

CHECKED BY: _

DATE: _

REV. BY DATE DESCRIPTION

DESCRIPTION

DMI 1 X 2 FLAT SHANK

MATERIAL

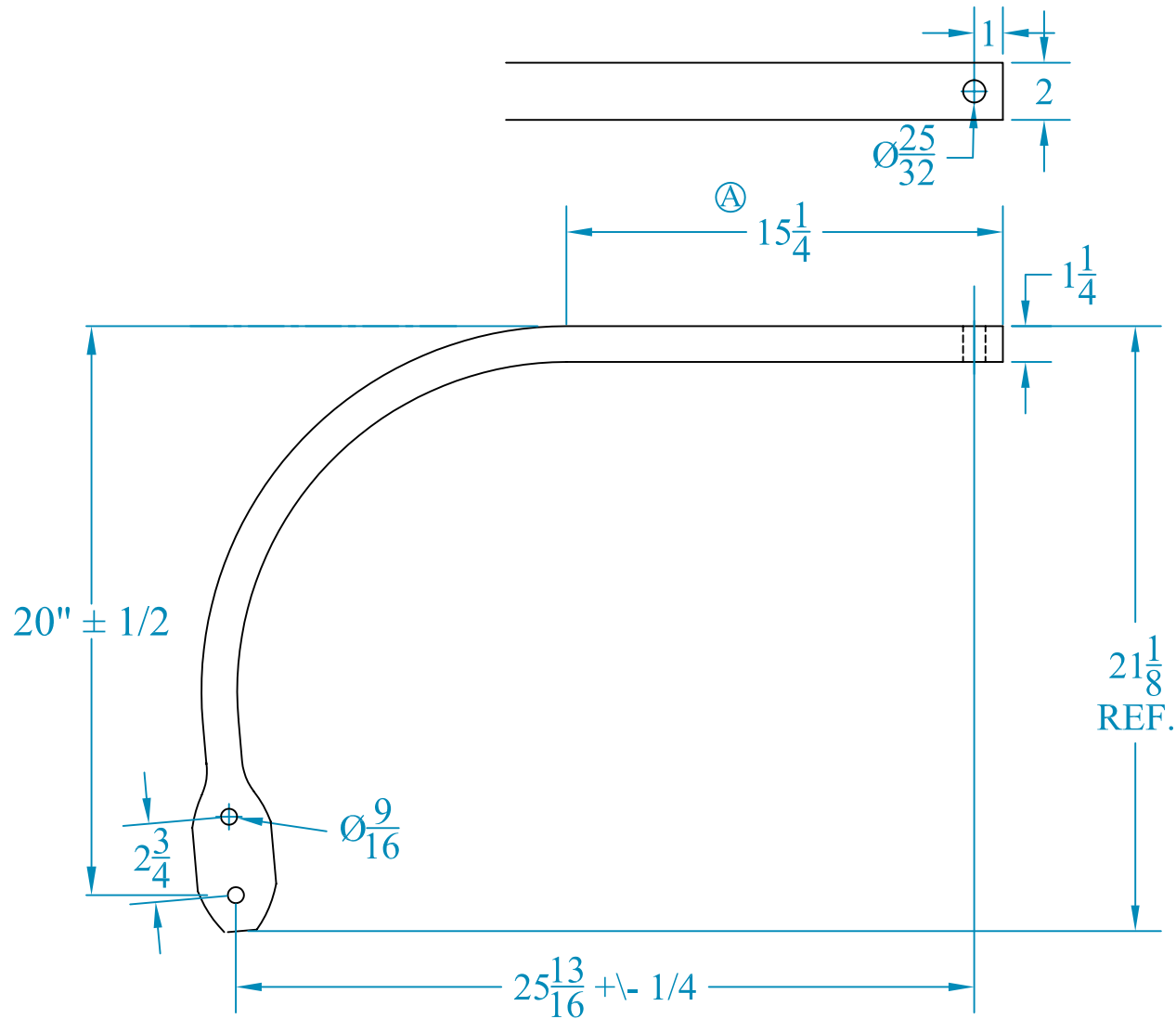
1 X 2 5160 HR BAR

PART NO.

KSC-1298

REV.

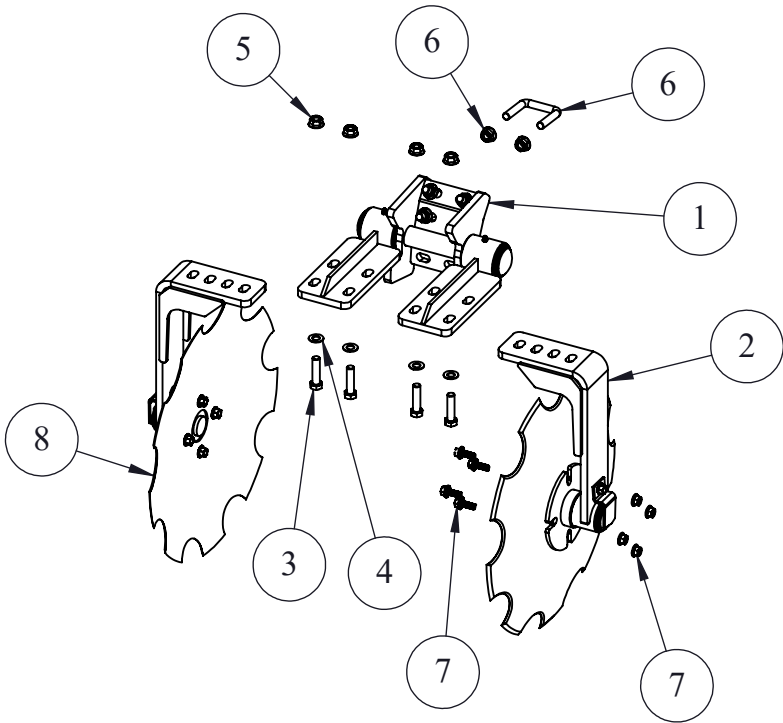
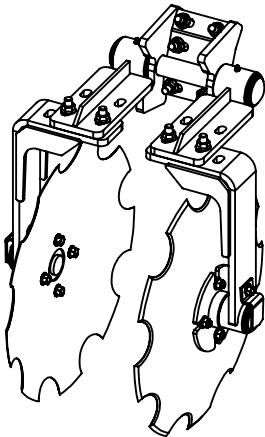
NC



-	-	-	-	TOLERANCE UNLESS OTHERWISE NOTED 0/0 +/- .06 0.00 +/- .020 0.000 +/- .005 0.0000 +/- .001 ANGLE +/- 1	<div>SHIELD</div> AGRICULTURAL EQUIPMENT		
-	-	-	-				
-	-	-	-		DRAWN BY: SHORES	DATE: 02/24/09	
A	BA	10/28/08	CHANGED TOP LENGTH FROM 16 TO 15 1/4, ADDED SHEAR LENGTH		CHECKED BY: _	DATE: _	
REV.	BY	DATE	DESCRIPTION				
DESCRIPTION SHIELD AG 1 1/4 X 2 FERTILIZER SHANK				MATERIAL 1 1/4 X 2 5160 HR BAR		PART NO. KSC-1299	REV. A

INCLUDED IN KSC-441100			
ITEM NO.	PART NUMBER	DESCRIPTION	QTY.
1	KSC-441096	Upper Sealer Arm Assembly	1
		SEE PAGE TWO FOR SERVICE PARTS	
2	KSC-441095	Lower Sealer Arm Assembly	2
		SEE PAGE TWO FOR SERVICE PARTS	
3	104-B1	1/2-13 X 2" HHCS (Hex Bolt) Grade 5	4
4	MF4	1/2" Flat Washer	4
5	AP-500589	1/2-13 Flange Serrated Top Lock Nut	4
6	KSC-441072-U1	1 OR 1-1/4 X 2 "Flat Way" Shank U-Bolt Hardware Pack	1
		Includes 3ea U-Bolts (AP-505525) and 6ea Nuts (AP-500589)	
7	KSC-441072-B1	18-DB11-NO Hardware Pack	1
		Includes 8ea Bolts (AP-510694) and 8ea Nuts (AP-500585)	
8	18-DB11-NO	18" NOTCHED CONCAVE BLADE	2

OPTIONAL U-BOLT PACKAGE (ORDER SEPARATELY)			
ITEM NO.	PART NUMBER	DESCRIPTION	QTY.
6	KSC-441072-U2	1-1/4 X 2 "Edge On" Shank U-Bolt Hardware Pack	1
		Includes 3ea U-Bolts (AP-305648) and 6ea Nuts (AP-500589)	



OPTIONAL BLADES / HARDWARE			
PART NUMBER	DESCRIPTION	HARDWARE P/N	DESCRIPTION
18-DB11-P	18" PLAIN	KSC-441072-B1	3/8-16 x 1" Serrated Flange Bolt (AP-510694) and Flange Nut (AP-500585)
KSC-33551870	18" PLAIN CONCAVE	KSC-441072-B2	1/2-13 x 1" Carriage Bolt (AP-500426) and Flange Nut (AP-500587)
17WB-CLOSER	17", 12-WAVE DMI SQR PUNCH	KSC-441072-B2	1/2-13 x 1" Carriage Bolt (AP-500426) and Flange Nut (AP-500587)
17WB-COMBO	17", 12-WAVE COMBO	KSC-441072-B3	1/2-13 x 1" Serrated Flange Bolt (AP-510692) and Flange Nut (AP-500587)
KSC-33551445	14" CONCAVE	KSC-441072-B4	7/16-14 x 1" Serrated Flange Bolt (AP-510699) and Flange Nut (AP-500586)
KSC-33551445N	14" NOTCHED CONCAVE	KSC-441072-B4	7/16-14 x 1" Serrated Flange Bolt (AP-510699) and Flange Nut (AP-500586)

NOTE: OPTIONAL BLADES SUBJECT TO AVAILABILITY
NOTE: HARDWARE IS 4ea PER BLADE

1 OF 2

-

-

-

-

-

-

-

-

-

-

-

-

A

LH

7/2/2014

ADDED DESCRIPTION TO 17" WAVY BLADES

REV.

BY

DATE

DESCRIPTION

DESCRIPTION

SEALER

MATERIAL

ASSEMBLY

DO NOT SCALE DRAWING

Weight: 67.8 LBS

TOLERANCE UNLESS OTHERWISE NOTED

0/0 +/- .06

0.00 +/- .020

0.000 +/- .005

0.0000 +/- .001

ANGLE +/- 1

KSC-441100

A

SHIELD

AGRICULTURAL EQUIPMENT

DRAWN BY: HURLBUT

DATE: 8/30/2012

CHECKED BY:

DATE:

PART NO.

KSC-441100

REV.

A

5

4

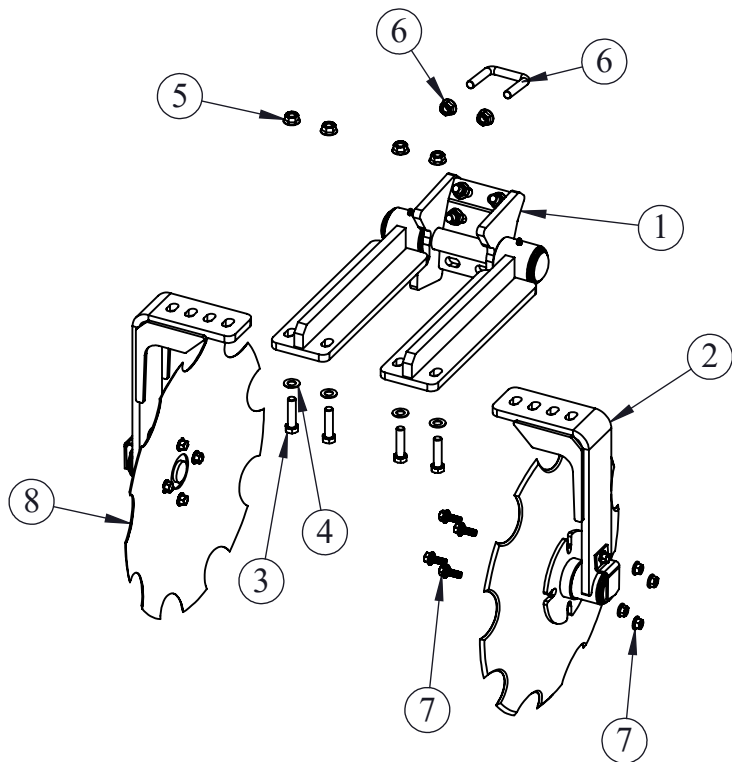
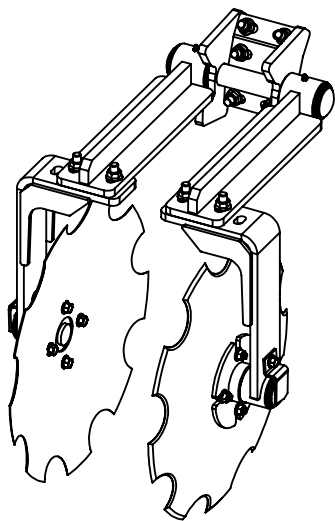
3

2

1

INCLUDED IN KSC-441100-E			
ITEM NO.	PART NUMBER	DESCRIPTION	QTY.
1	KSC-441096-E	Upper Sealer Arm Assembly, ONE EXTENDED	1
		SEE PAGE TWO FOR SERVICE PARTS	
2	KSC-441095	Lower Sealer Arm Assembly	2
		SEE PAGE TWO FOR SERVICE PARTS	
3	104-B1	1/2-13 X 2" HHCS (Hex Bolt) Grade 5	4
4	MF4	1/2" Flat Washer	4
5	AP-500589	1/2-13 Flange Serrated Top Lock Nut	4
6	KSC-441072-U1	1 OR 1-1/4 X 2 "Flat Way" Shank U-Bolt Hardware Pack	1
		Includes 3ea U-Bolts (AP-505525) and 6ea Nuts (AP-500589)	
7	KSC-441072-B1	18-DB11-NO Hardware Pack	1
		Includes 8ea Bolts (AP-510694) and 8ea Nuts (AP-500585)	
8	18-DB11-NO	18" NOTCHED CONCAVE BLADE	2

OPTIONAL U-BOLT PACKAGE (ORDER SEPARATELY)			
ITEM NO.	PART NUMBER	DESCRIPTION	QTY.
6	KSC-441072-U2	1-1/4 X 2 "Edge On" Shank U-Bolt Hardware Pack	1
		Includes 3ea U-Bolts (AP-305648) and 6ea Nuts (AP-500589)	



EST. WEIGHT: 81.12 LBS

OPTIONAL BLADES / HARDWARE			
PART NUMBER	DESCRIPTION	HARDWARE P/N	DESCRIPTION
18-DB11-P	18" PLAIN	KSC-441072-B1	3/8-16 x 1" Serrated Flange Bolt (AP-510694) and Flange Nut (AP-500585)
KSC-33551870	18" PLAIN CONCAVE	KSC-441072-B2	1/2-13 x 1" Carriage Bolt (AP-500426) and Flange Nut (AP-500587)
17WB-CLOSER	17", 12-WAVE DMI SQR PUNCH	KSC-441072-B2	1/2-13 x 1" Carriage Bolt (AP-500426) and Flange Nut (AP-500587)
17WB-COMBO	17", 12-WAVE COMBO	KSC-441072-B3	1/2-13 x 1" Serrated Flange Bolt (AP-510692) and Flange Nut (AP-500587)
KSC-33551445	14" CONCAVE	KSC-441072-B4	7/16-14 x 1" Serrated Flange Bolt (AP-510699) and Flange Nut (AP-500586)
KSC-33551445N	14" NOTCHED CONCAVE	KSC-441072-B4	7/16-14 x 1" Serrated Flange Bolt (AP-510699) and Flange Nut (AP-500586)

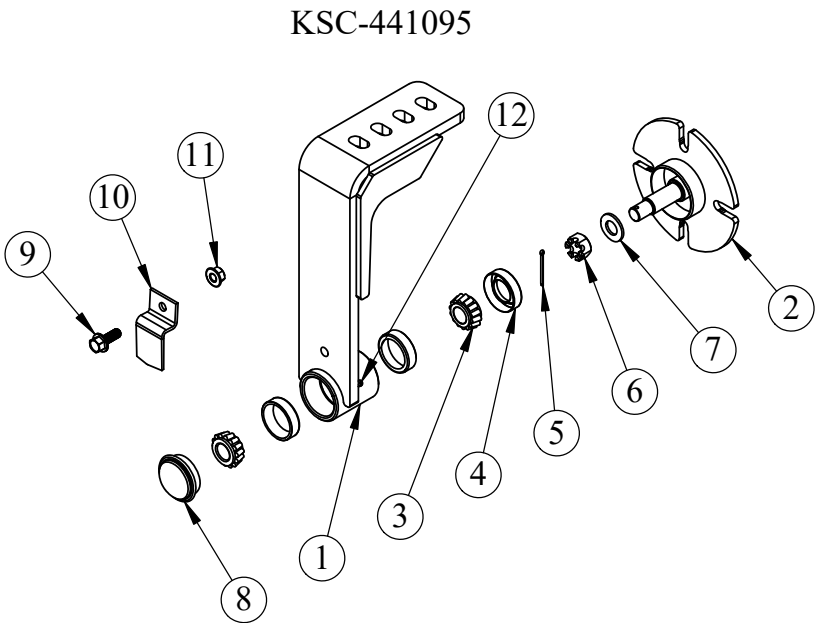
NOTE: OPTIONAL BLADES SUBJECT TO AVAILABILITY

NOTE: HARDWARE IS 4ea PER BLADE

1 OF 2

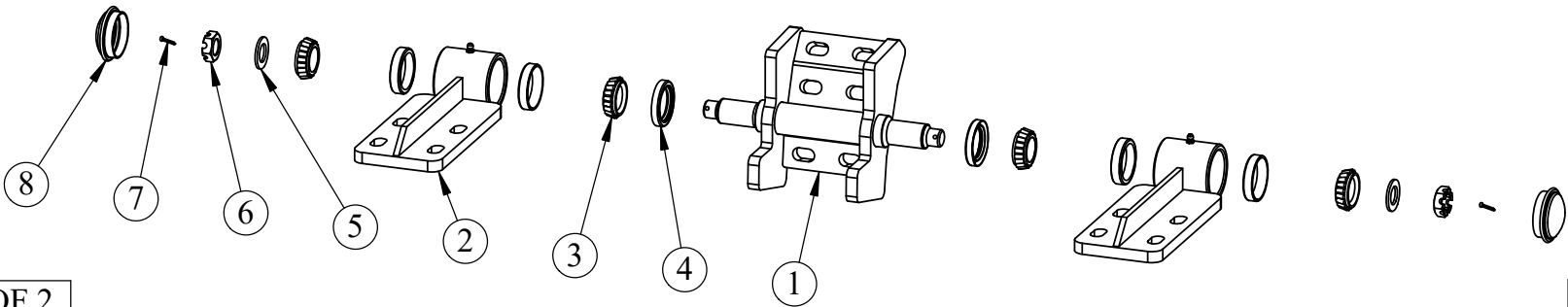
-	-	-	-	TOLERANCE UNLESS OTHERWISE NOTED 0/0 +/- .06 0.00 +/- .020 0.000 +/- .005 0.0000 +/- .001 ANGLE +/- 1		<div>KSC-441100-E</div> <div>NC</div> <div>SHIELD</div> <div>AGRICULTURAL EQUIPMENT</div> <div>DRAWN BY: HURLBUT DATE: 2/15/2017</div> <div>CHECKED BY: DATE:</div>	
-	-	-	-				
-	-	-	-				
-	-	-	-				
REV.	BY	DATE	DESCRIPTION	DO NOT SCALE DRAWING		PART NO.	REV.
SEALER, WITH EXTENSION ARM				Weight: 81.12 LBS		KSC-441100-E	NC
ASSEMBLY							

KSC-441095			
ITEM NO.	PART NUMBER	DESCRIPTION	QTY.
1	KSC-441091	LOWER ARM	1
2	KSC-441094	DISC SPINDLE	1
3	KSC-LM11949	LOWER BEARING CONE, LM11949	2
4	KSC-906297	LOWER END SEAL (POS10017846VHY-S)	1
5	AP-515454	COTTER PIN, 1/8 X 1 1/2"	1
6	KSC-442953	5/8"-18 CASTLE NUT	1
7	AP-500621	5/8" FLAT WASHER, SAE	1
8	KSC-909912	LOWER HUB CAP	1
9	AP-510694	3/8"-16 X 1" FLANGE BOLT	1
10	KSC-441097C	SEALER LOWER ARM CLIP	1
11	AP-500585	3/8" FLANGE NUT	1
12	KSC-466360-GF	GREASE ZERK	1



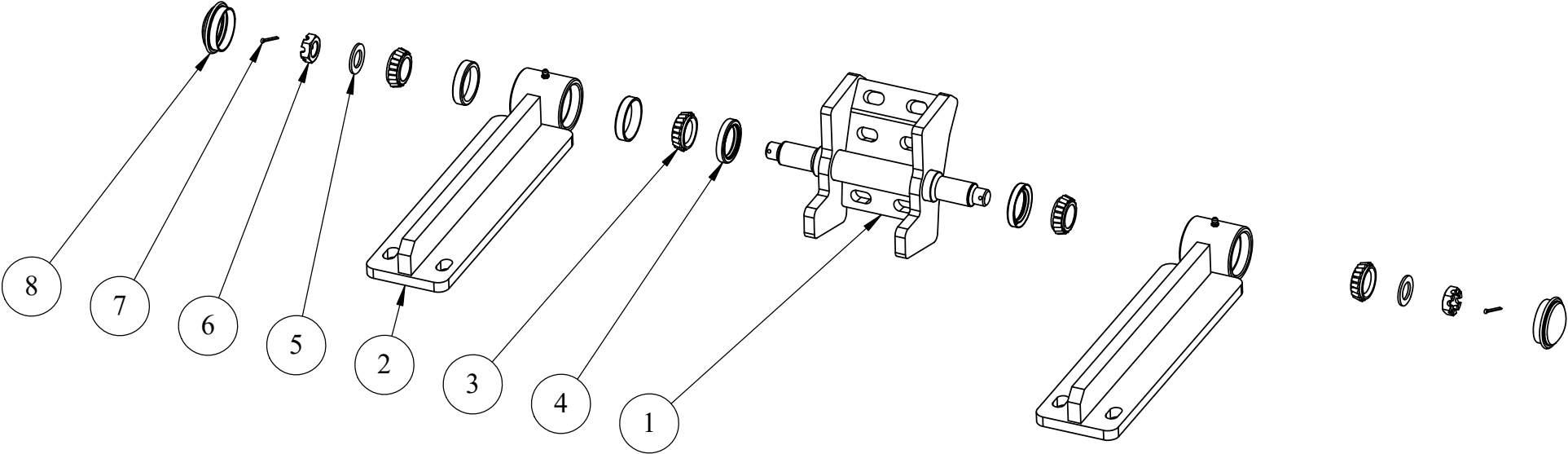
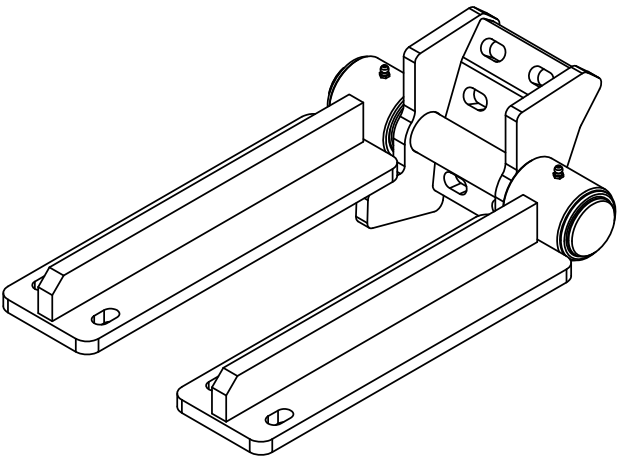
KSC-441096			
ITEM NO.	PART NUMBER	DESCRIPTION	QTY.
1	KSC-441093	CENTER ASSEMBLY	1
2	KSC-441092	UPPER PIVOT ARM	2
3	KSC-L44649	UPPER BEARING CONE, L44649	4
4	KSC-906298	UPPER SPINDLE SEAL (TCM 13193 PSB)	2
5	KSC-913608	3/4" SPINDLE WASHER	2
6	KSC-442954	3/4"-16 CASTLE JAM NUT	2
7	AP-515454	COTTER PIN, 1/8 X 1 1/2"	2
8	KSC-909913	UPPER HUB CAP	2
9	KSC-466360-GF	GREASE ZERK	2

KSC-441096



2 OF 2				SERVICE PARTS		A
-	-	-	-	TOLERANCE UNLESS OTHERWISE NOTED 0/0 +/- .06 0.00 +/- .020 0.000 +/- .005 0.0000 +/- .001 ANGLE +/- 1		SHIELD AGRICULTURAL EQUIPMENT
-	-	-	-			
-	-	-	-			DRAWN BY: HURLBUT DATE: 8/30/2012
-	-	-	-			CHECKED BY: DATE:
REV.	BY	DATE	DESCRIPTION	DO NOT SCALE DRAWING		PART NO. SERVICE PARTS
DESCRIPTION SEALER SERVICE PARTS			MATERIAL ASSEMBLY			REV. A

ITEM NO.	PART NUMBER	DESCRIPTION	QTY.
1	KSC-441093	CENTER ASSEMBLY	1
2	KSC-441092-E	UPPER PIVOT ARM, EXTENDED	2
3	KSC-L44649	UPPER BEARING CONE, L44649	4
4	KSC-906298	UPPER SPINDLE SEAL (TCM 13193 PSB)	2
5	KSC-913608	3/4" SPINDLE WASHER	2
6	KSC-442954	3/4"-16 CASTLE JAM NUT	2
7	AP-515454	COTTER PIN, 1/8 X 1 1/2"	2
8	KSC-909913	UPPER HUB CAP	2
9	KSC-466360-GF	GREASE ZERK	2



				KSC-441096-E		NC
-	-	-	-	TOLERANCE UNLESS OTHERWISE NOTED 0/0 +/- .06 0.00 +/- .020 0.000 +/- .005 0.0000 +/- .001 ANGLE +/- 1		SHIELD AGRICULTURAL EQUIPMENT
-	-	-	-			
-	-	-	-			
-	-	-	-			
REV.	BY	DATE	DESCRIPTION	DO NOT SCALE DRAWING		PART NO.
UPPER SEALER ARMS, EXTENDED				Weight: 37.07 LBS		KSC-441096-E
ASSEMBLY						REV. NC

KSC-441096-E NC

SHIELD

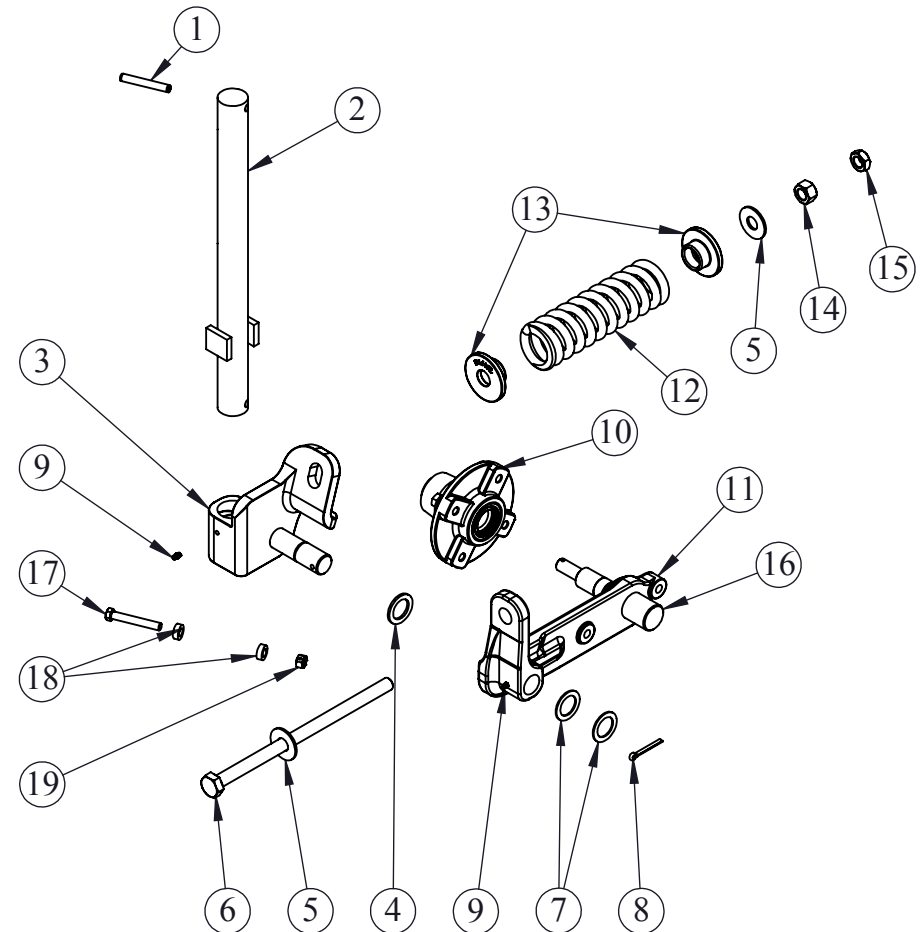
AGRICULTURAL EQUIPMENT

DRAWN BY: HURLBUT DATE: 7/14/2015
CHECKED BY: DATE:

PART NO. KSC-441096-E REV. NC

ITEM NO.	PART NUMBER	DESCRIPTION	QTY.
1	KSC-466360-RP716	SPRING PIN, 7/16 X 3	1
2	KSC-466315	COULTER SHAFT	1
3	KSC-466320S	CAST STEEL COULTER PIVOT ASSEMBLY	1
4	KSC-466360-MB10	MACHINE BUSHING, 10 GA	1
5	MF6H	WASHER, FLAT, 3/4" HIGH STRENGTH	2
6	106-N1	HHCS, 3/4" X 14" BOLT GR 5	1
7	KSC-466360-MB14	MACHINE BUSHING, 14 GA	2
8	KSC-466360-CP	COTTER PIN, 1/4 X 2"	1
9	KSC-466360-GF	DRIVE ZERK, 1/8 NPT	2
10	KSC-466300-HUB	N633 HUB ASSEMBLY WITH BEARINGS	1
		SEE PAGE 2 FOR HUB SERVICE	
11	KSC-466300S	CAST STEEL COULTER ARM ASSEMBLY	1
12	SPR-1	MAIN SPRING	1
13	S1244SL-SPCC	SPRING CAP, CAST	2
14	N6	NUT, 3/4-10 GR5	1
15	N6J	NUT, 3/4-10 HEX JAM	1
16	KSC-466300-SPL	N633 SPINDLE WITH HARDWARE	1
17	AP-500476	7/16-14 X 3 HEX BOLT GR8	1
18	BE0013	SPACER	2
19	AP-500601	7/16-14 CENTERLOCK HEX NUT	1
		SEE PAGE 2 FOR SPINDLE SERVICE	
	20 PL COMBO (NOT SHOWN)	20" SMOOTH BLADE	
	20 FL COMBO (NOT SHOWN)	20" FLUTED BLADE	
	20 FLC COMBO (NOT SHOWN)	20 CRUCIBLE BLADEB1	
	20 NO COMBO (NOT SHOWN)	20" NOTCHED BLADE	

STANDARD KSC-466360 SHOWN HERE
KSC-466360LH AFFECTS TWO PARTS:
KSC-466320 (ITEM 3) BECOMES KSC0466320-LH
KSC-466300 (ITEM 11) BECOMES KSC-466300-LH

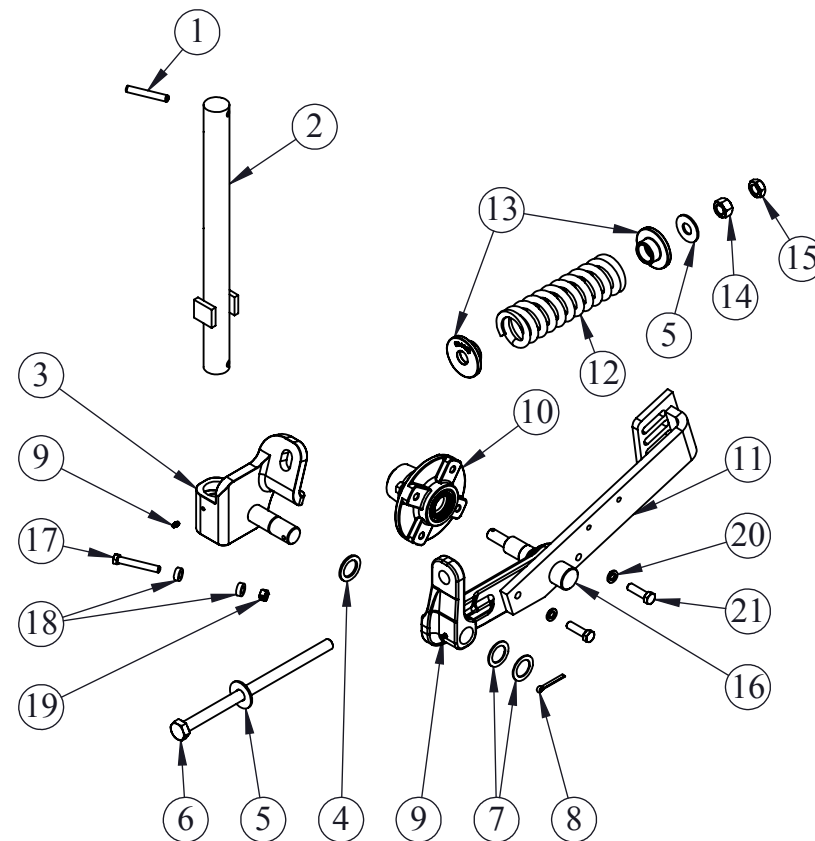


STANDARD BLADE IS 20PL-COMBO

1 OF 2				KSC-466360		C
-	-	-	-	TOLERANCE UNLESS OTHERWISE NOTED 0/0 +/- .06 0.00 +/- .020 0.000 +/- .005 0.0000 +/- .001 ANGLE +/- 1		
C	LH	2/13/14	REPLACED COLLAR WITH BOLT AND ROLLERS			
B	AL	5/22/07	CHANGED POSITION OF DRIVE ZERK, CHANGED GREASE ZERK TO DRIVE ZERK			
A	BA	12/12/06	ADDED ITEM 17, DRAWING REVISION			
REV.	BY	DATE	DESCRIPTION			
DESCRIPTION			MATERIAL	SHIELD AGRICULTURAL EQUIPMENT DRAWN BY: HURLBUT DATE: 3/6/2014 CHECKED BY: DATE: PART NO. KSC-466360 REV. C		
20" Coulter Arm Assembly			Assembly			
5			4	3		
				2		
				1		

ITEM NO.	PART NUMBER	DESCRIPTION	QTY.
1	KSC-466360-RP716	7/16 X 3 SPRING PIN	1
2	KSC-466315	COULTER SHAFT	1
3	KSC-466320S	CAST STEEL COULTER PIVOT ASSEMBLY	1
4	KSC-466360-MB10	MACHINE BUSHING, 10 GA	1
5	MF6H	WASHER, FLAT, 3/4" HIGH STRENGTH	2
6	106-N1	HHCS, 3/4" X 14" BOLT GR 5	1
7	KSC-466360-MB14	MACHINE BUSHING, 14 GA	2
8	KSC-466360-CP	COTTER PIN, 1/4 X 2"	1
9	KSC-466360-GF	DRIVE ZERK, 1/8 NPT	
10	KSC-466300-HUB	N633 HUB ASSEMBLY WITH BEARINGS	1
		SEE PAGE 2 FOR HUB SERVICE	
11	KSC-531020S	CAST STEEL COULTER ARM ASSEMBLY	1
12	SPR-1	MAIN SPRING	1
13	S1244SL-SPCC	SPRING CAP, CAST	2
14	N6	NUT, 3/4-10 GR5	1
15	N6J	NUT, 3/4-10 HEX JAM	1
16	KSC-466300-SPL	N633 SPINDLE W/ HARDWARE	1
17	AP-500476	7/16-14 X 3 HEX BOLT GR8	1
18	BE0013	SPACER	2
19	AP-500601	7/16-14 CENTERLOCK HEX NUT	1
20	LW4	1/2" LOCK WASHER	2
21	AP-500489	1/2-13 X 1 3/4 HEX BOLT GR5	2
		SEE PAGE 2 FOR SPINDLE SERVICE	
	20PL-COMBO (NOT SHOWN)	20" SMOOTH BLADE	
	20FL-COMBO (NOT SHOWN)	20" FLUTED BLADE	
	20FLC-COMBO (NOT SHOWN)	20" CRUCIBLE BLADE	
	20NO-COMBO (NOT SHOWN)	20" NOTCHED BLADE	

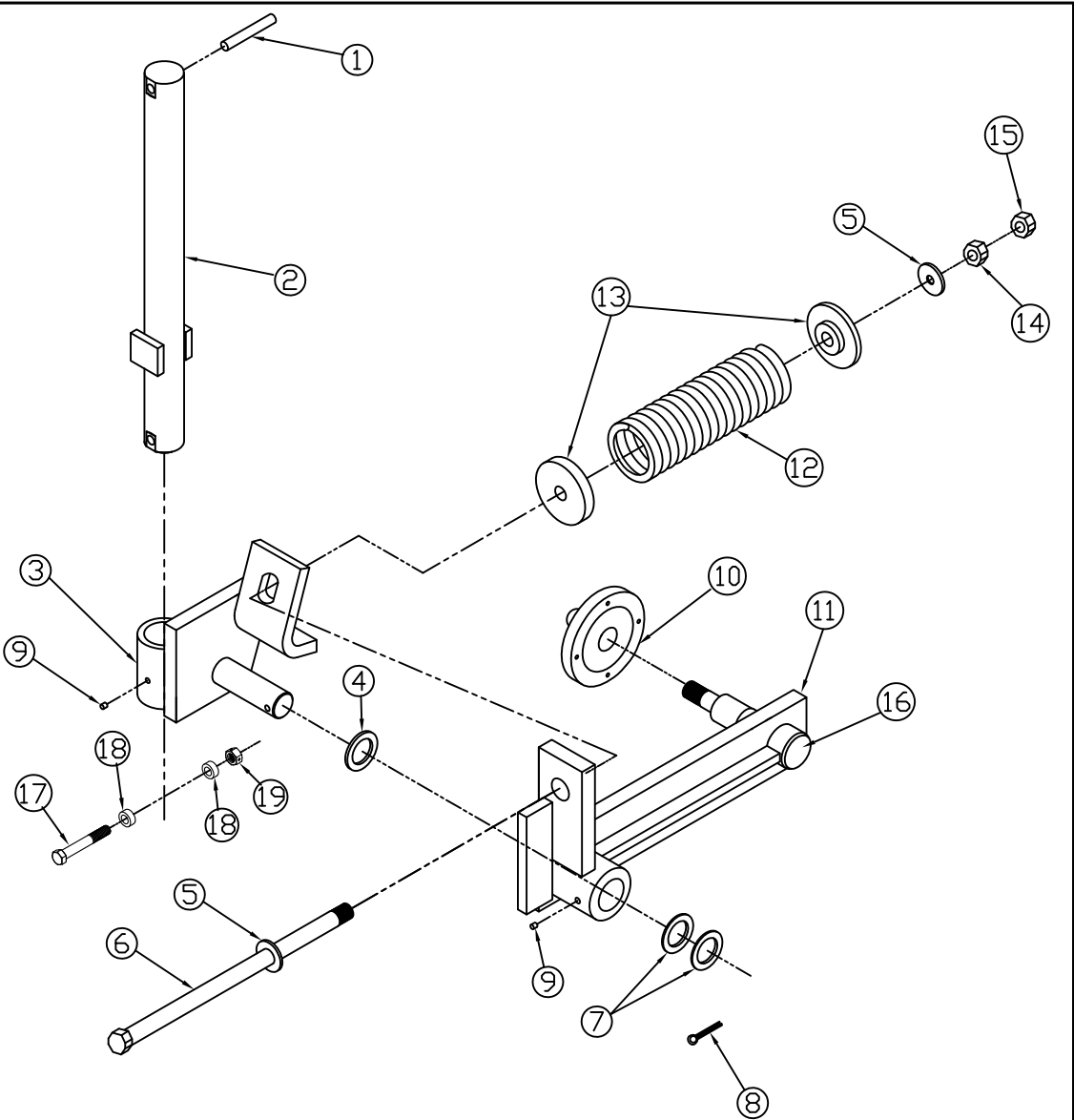
STANDARD KSC-531002 SHOWN HERE
KSC-531002LH AFFECTS TWO PARTS:
KSC-466320S (ITEM 3) BECOMES KSC0466320S-LH
KSC-531020S (ITEM 11) BECOMES KSC-531020S-LH



STANDARD BLADE IS 20FLC-COMBO

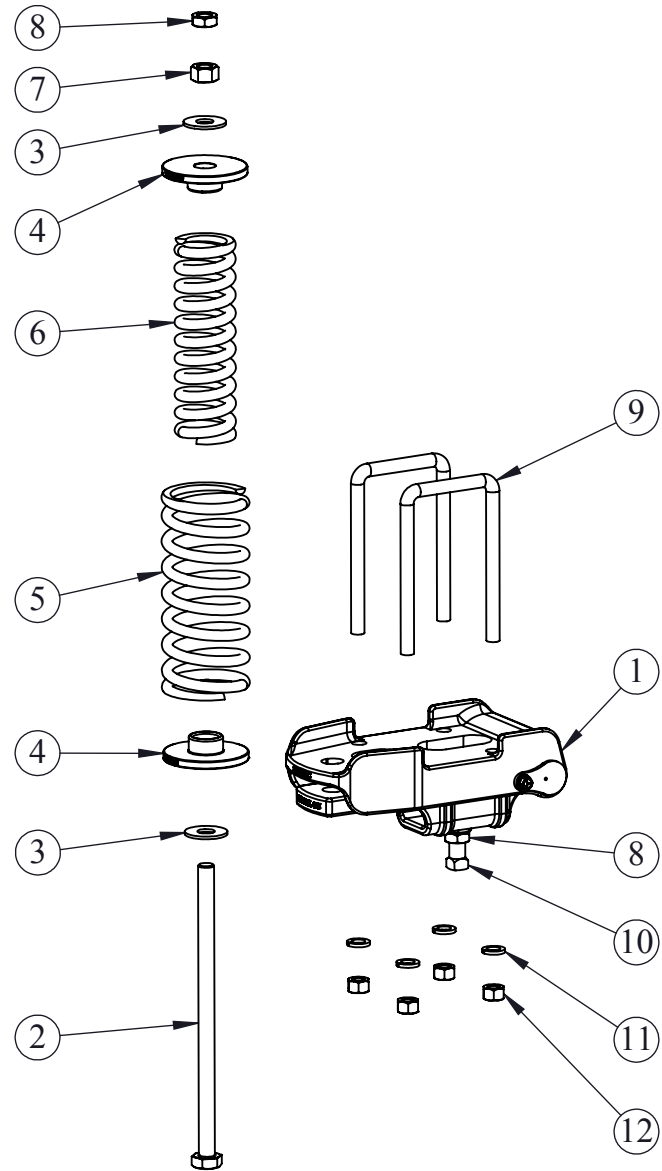
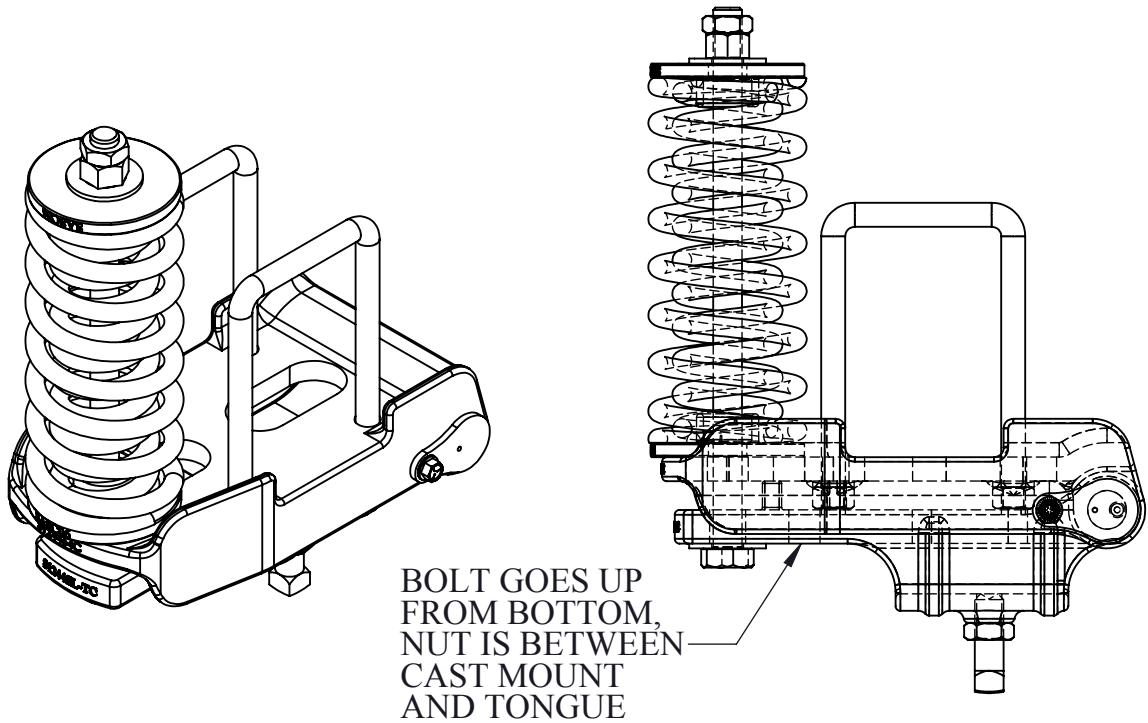
1 OF 2				KSC-531002				C
-	-	-	-	TOLERANCE UNLESS OTHERWISE NOTED 0/0 +/- .06 0.00 +/- .020 0.000 +/- .005 0.0000 +/- .001 ANGLE +/- 1				SHIELD AGRICULTURAL EQUIPMENT DRAWN BY: HURLBUT CHECKED BY: DATE: 2/13/2014 DATE:
C	LH	2/13/14	REPLACED COLLAR WITH BOLT AND ROLLERS					
B	AL	5/22/07	CHANGED POSITION OF DRIVE ZERK, CHANGED GREASE ZERK TO DRIVE ZERK					
A	BA	12/12/06	ADDED ITEM 17, DRAWING REVISION					
REV.	BY	DATE	DESCRIPTION					
DESCRIPTION				MATERIAL				
20" COULTERARM ASSEMBLY				ASSEMBLY				
				DO NOT SCALE DRAWING				
				Weight: 72.43 LBS				
				PART NO.				
				KSC-531002				
				REV.				
				C				

Item	Part #	DESCRIPTION	QTY
1	KSC-466360-RP716	Spring Pin, 7/16 X 3	1
2	KSC-466315 (20" & 24")	COULTER SHAFT	1
3	KSC-466320	COULTER PIVOT ASSEMBLY	1
4	KSC-466360-MB10	Machine Bushing 10 ga	1
5	MF6H	Washer, Flat, 3/4" High Strength	2
6	106-N1	HHCS,3/4" X 14" BOLT GR.5	1
7	KSC-466360-MB14	Machine Bushing, 14 ga	2
8	KSC-466360-CP	Cotter Pin, 1/4 X 2	1
9	KSC-466360-GF	Drive Zerk	2
10	KSC-466300-HUB	N633 Hub Assembly With Bearings	1
		See Page 2 for HUB Service	
11	KSC-466300 (20"), KSC-466305 (24")	COLTER ARM ASSEMBLY	1
12	SPR-1 (20"&24")	MAIN SPRING	1
13	S1244SL-SPC	SPRING CAP WELDMENT	2
14	N6	NUT, HEX, 3/4" High Strength	1
15	N6J	NUT, HEX, JAM, 3/4" PLATED	1
16	KSC-466300-SPL	N633 Spindle W/ Hardware	1
17	KSC-500476	7/16-14 X 3 HEX BOLT GR8	1
18	BE0013	SPACER	2
19	AP-500601	7/16-14 CENTERLOCK HEX BOT	1
		See Page 2 for Spindle Service	
20	24PL COMBO, NOT SHOWN	24" SMOOTH BLADE, 8-HOLE	
	24PLDBJ CLT, OPTIONAL	24" SMOOTH BLADE, 4 HOLE	1



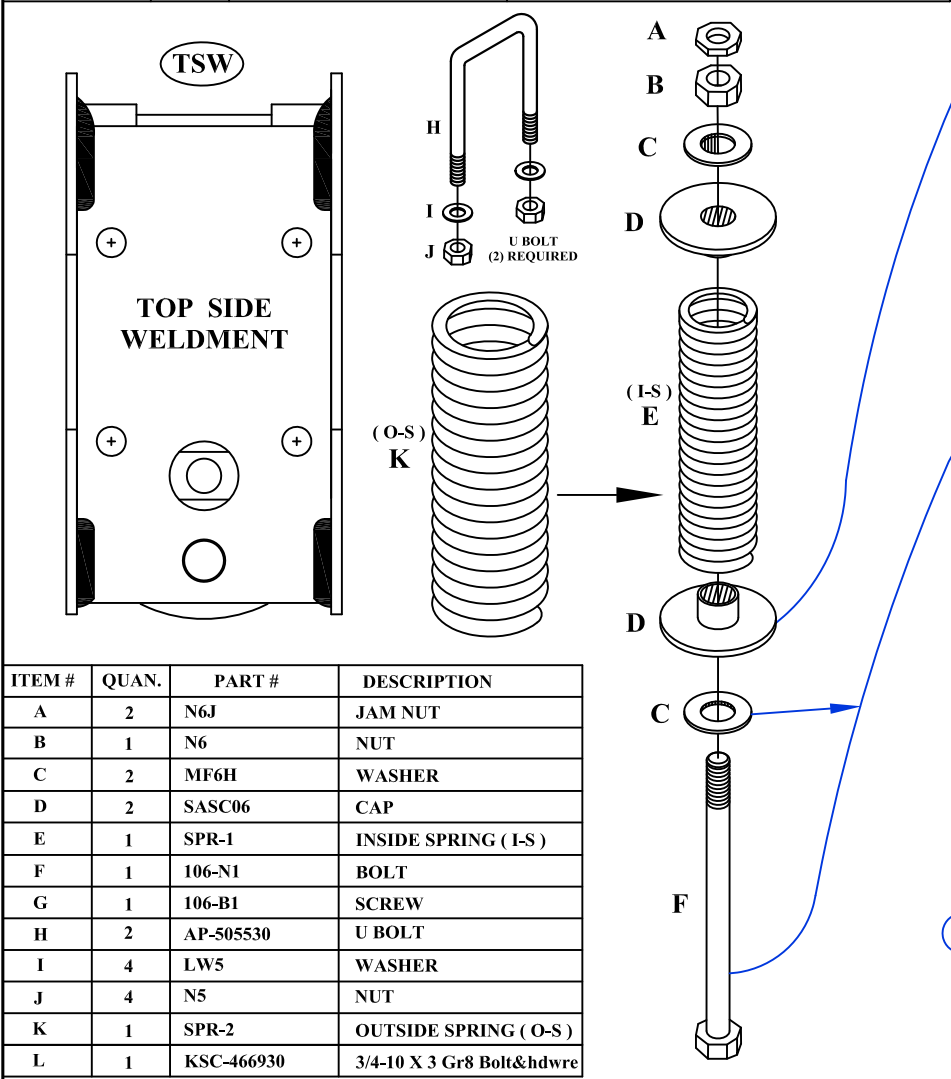
1 OF 2												
-	-	-	-					TOLERANCE UNLESS OTHERWISE NOTED 0/0 +/- 1/32 0.00 +/- .020 0.000 +/- .005 0.0000 +/- .001 ANGLE +/- 1/2	<div>SHIELD</div> <div>AGRICULTURAL EQUIPMENT</div>			
C	LH	2/13/14	REPLACED COLLAR WITH BOLT AND ROLLERS									
B	AL	5/22/07	Changed Positition of Drive Zerk , Changed Grease Zerk to Drive Zerk									
A	BA	12/12/06	ADDED ITEM 17, PICTORIAL REVISION									
REV.	BY	DATE	DESCRIPTION									
DESCRIPTION			MATERIAL					PART NO.		REV.		
24" Coulter Arm Assembly			ASSEMBLY					KSC-466370		C		

ITEM NO.	PART NUMBER	DESCRIPTION	QTY.
1	S-124464CFRAME	CAST WELDFRAME	1
2	106-N1	HHCS, 3/4" X 14" BOLT GR 5	1
3	MF6H	WASHER, FLAT, 3/4" HIGH STRENGTH	2
4	SASC06-C	LARGE SPRING CAP, CAST	2
5	SPR-2	OUTER SPRING	1
6	SPR-1	MAIN SPRING	1
7	N6H	HEAVY NUT, 3/4-10 GR2	1
8	N6J	NUT, HEX JAM	2
9	AP-505530	5/8 x 4 x 7 1/2 U-BOLT	2
10	106-B1	SET SCREW 3/4-10 X 2 SQ HEAD CUP PT	1
11	LW5	5/8" LOCK WASHER	4
12	N5	NUT, 5/8-11	4

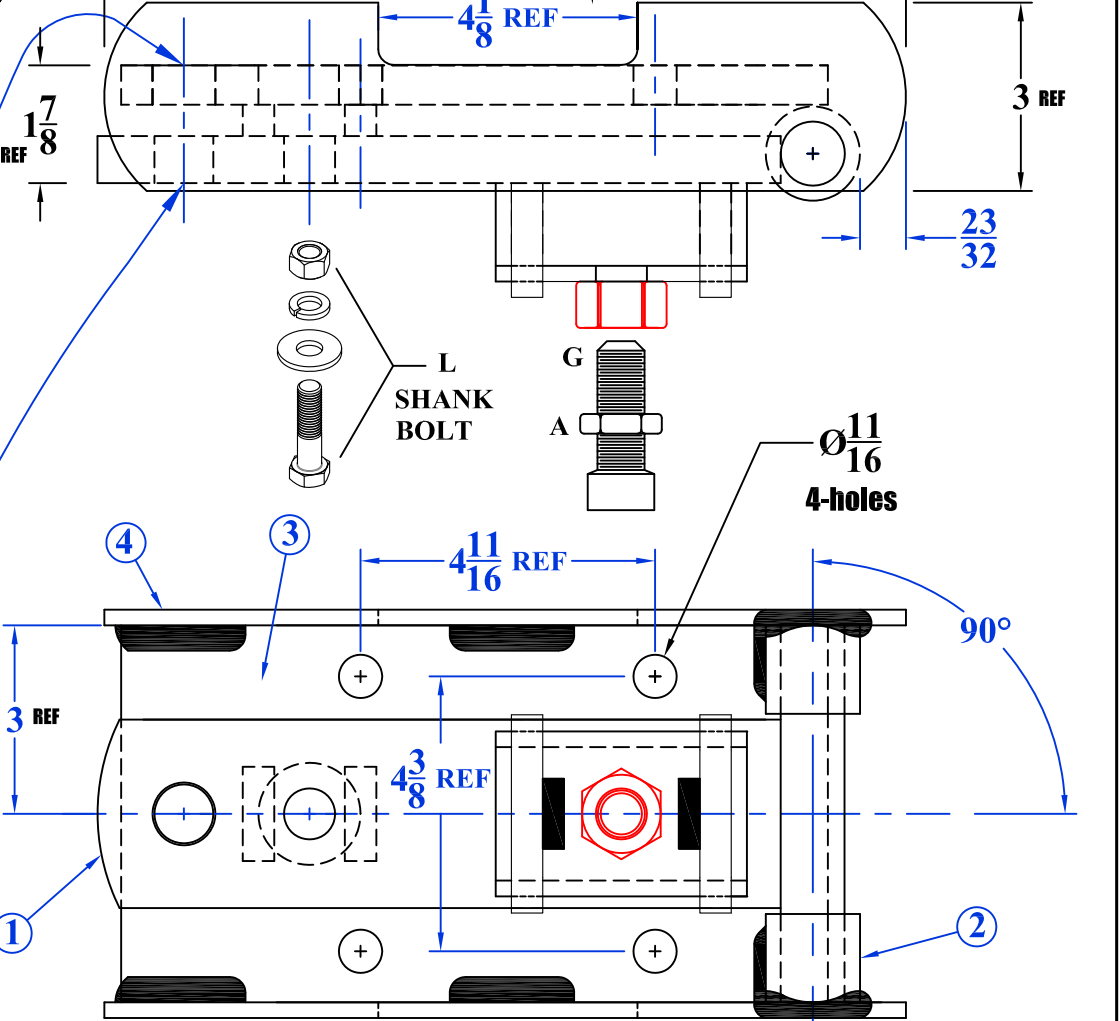


				S-1264CSLX		NC
-	-	-	-	TOLERANCE UNLESS OTHERWISE NOTED 0/0 +/- .06 0.00 +/- .020 0.000 +/- .005 0.0000 +/- .001 ANGLE +/- 1		SHIELD AGRICULTURAL EQUIPMENT
-	-	-	-			
-	-	-	-			
-	-	-	-			
REV.	BY	DATE	DESCRIPTION	DO NOT SCALE DRAWING		PART NO.
CAST SPRING CLAMP FOR 6 X 4 TOOLBAR				Weight: 50.87 LBS		S-1264CSLX
MATERIAL ASSEMBLY						REV. NC
						DRAWN BY: HURLBUT CHECKED BY:
						DATE: 5/16/2013 DATE:

ITEM #	QUAN.	PART #	DESCRIPTION
1	1	S1244SL-TW	SPRING CLAMP TONGUE WELDMENT
2	2	S1244SL-HT	HINGE TUBE 1.50"ODx1.02"IDx1 3/8"LONG
3	1	S1244SL-MP	MOUNT PLATE 5/8x6.0x11.5
4	2	S1244SL-TBG	TOOL BAR GUIDE 1/4x3x12 3/4 SIDE LOCATOR



ITEM #	QUAN.	PART #	DESCRIPTION
A	2	N6J	JAM NUT
B	1	N6	NUT
C	2	MF6H	WASHER
D	2	SASC06	CAP
E	1	SPR-1	INSIDE SPRING (I-S)
F	1	106-N1	BOLT
G	1	106-B1	SCREW
H	2	AP-505530	U BOLT
I	4	LW5	WASHER
J	4	N5	NUT
K	1	SPR-2	OUTSIDE SPRING (O-S)
L	1	KSC-466930	3/4-10 X 3 Gr8 Bolt&hdwre



S-1264SLX A

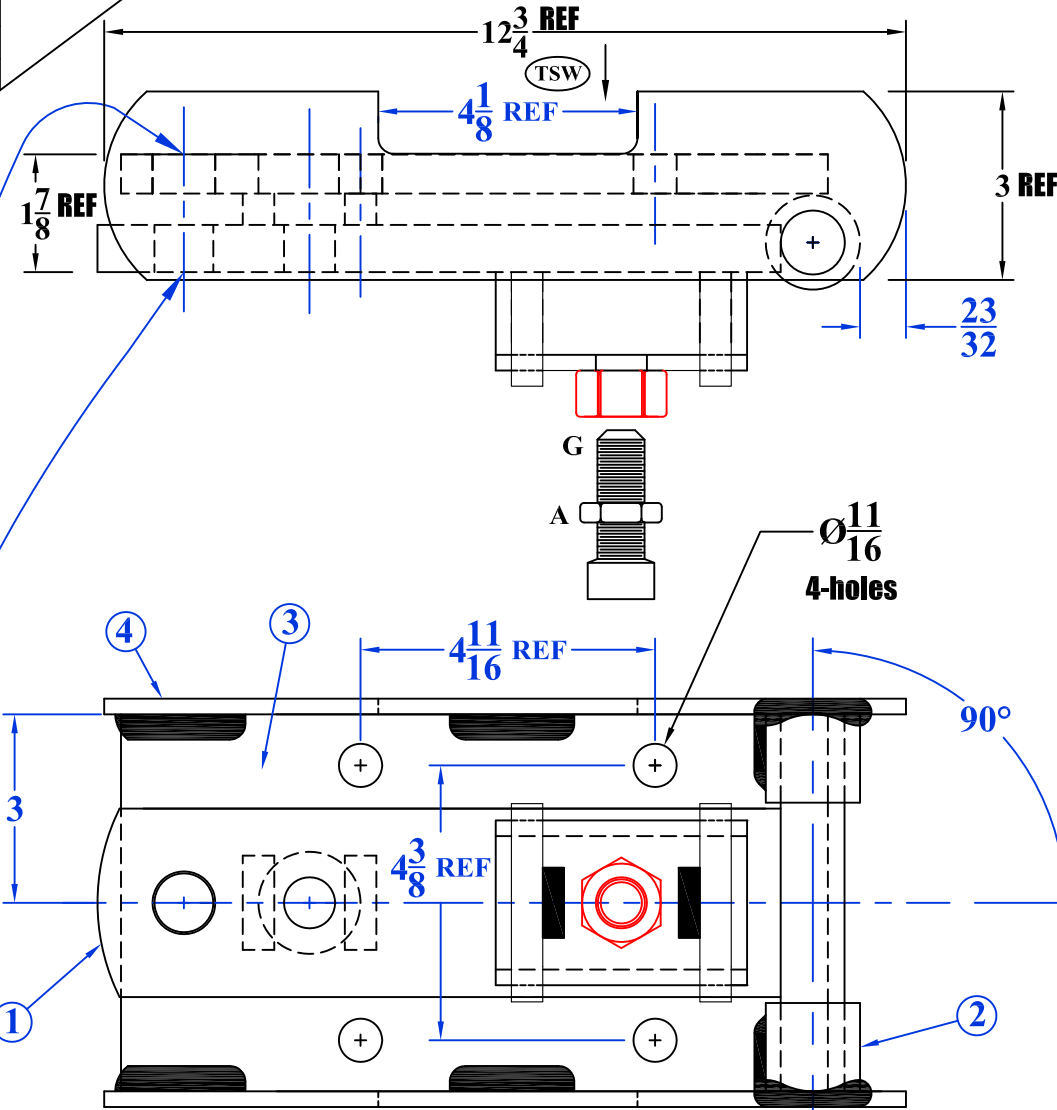
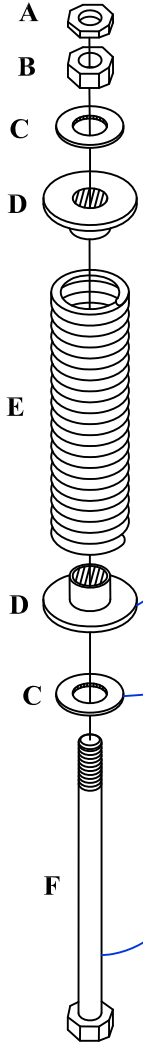
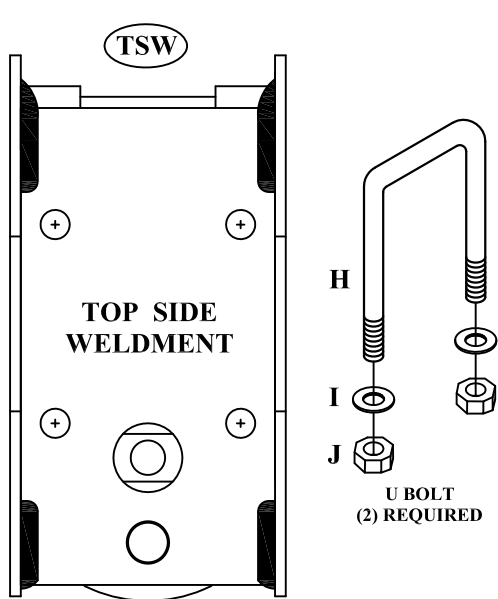
-	-	-	-
-	-	-	-
-	-	-	-
A	CS	6-1-13	Revised and redrawn
REV.	BY	DATE	DESCRIPTION

TOLERANCE UNLESS OTHERWISE NOTED	
0/0 +/-	1/16
0.00 +/-	.020
0.000 +/-	.005
0.0000 +/-	.001
ANGLE +/-	1/2
SHIELD AGRICULTURAL EQUIPMENT	
DRAWN BY: ALINK	DATE: 12\26\07
CHECKED BY: _	DATE: _

DESCRIPTION HD SPRING CLAMP FOR 6"V x 4" HORIZONTAL TOOLBAR		MATERIAL WELDMENT	PART NO. S-1264SLX	REV. A
---	--	-----------------------------	------------------------------	------------------

ITEM #	QUAN.	PART #	DESCRIPTION
1	1	S1244SL-TW	SPRING CLAMP TONGUE WELDMENT
2	2	S1244SL-HT	HINGE TUBE 1.50"ODx1.02"IDx1 3/8"LONG
3	1	S1244SL-MP	MOUNT PLATE 5/8x6.0x11.5
4	2	S1244SL-TBG	TOOL BAR GUIDE 1/4x3x12 3/4 SIDE LOCATOR

All parts here included in S-124464FRAME



ITEM #	QUAN.	PART #	DESCRIPTION
A	2	N6J	JAM NUT
B	1	N6	NUT
C	2	MF6H	WASHER
D	2	S1244SL-SPC	CAP
E	1	SPR-1	SPRING
F	1	106-N1	BOLT
G	1	106-B1	SCREW
H	2	AP-505530	U BOLT
I	4	LW5	WASHER
J	4	N5	NUT

S-1264SL A

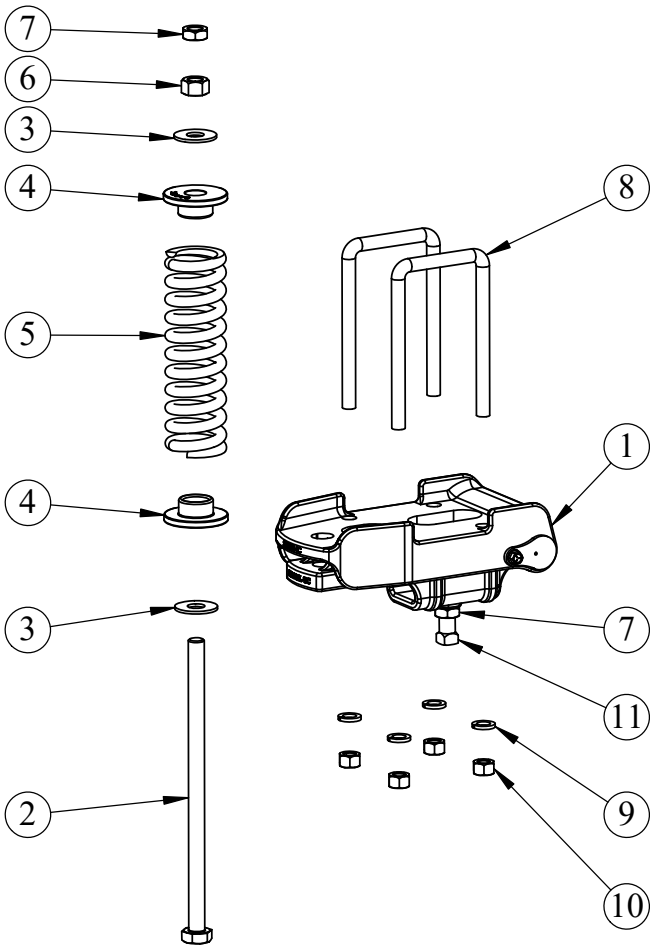
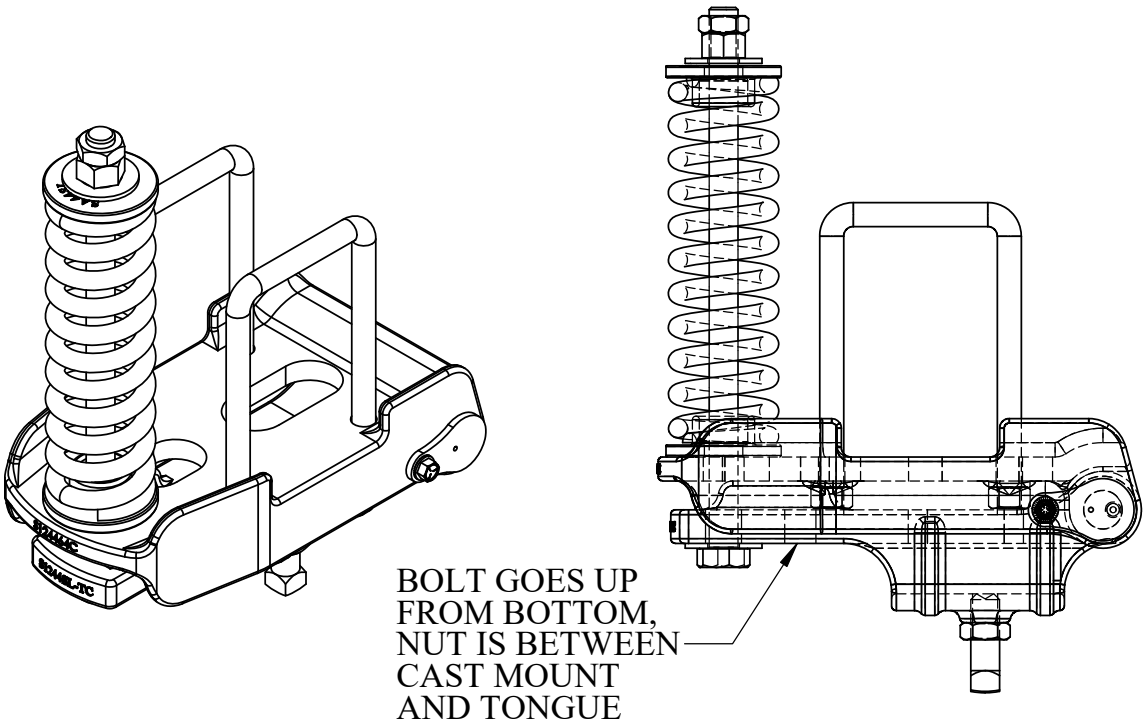
-	-	-	-
-	-	-	-
-	-	-	-
A	CS	6-1-13	Revised and Redrawn
REV.	BY	DATE	DESCRIPTION

TOLERANCE UNLESS OTHERWISE NOTED
0/0 +/- 1/16
0.00 +/- .020
0.000 +/- .005
0.0000 +/- .001
ANGLE +/- 1/2

SHIELD
AGRICULTURAL EQUIPMENT

DRAWN BY: ALINK DATE: 12\20\07
CHECKED BY: DATE:

ITEM NO.	PART NUMBER	DESCRIPTION	QTY.
1	S-124464CFRAME	CAST WELDFRAME	1
2	106-N1	HHCS, 3/4" X 14" BOLT GR 5	1
3	MF6H	WASHER, FLAT, 3/4" HIGH STRENGTH	2
4	S1244SL-SPCC	SPRING CAP, CAST	2
5	SPR-1	MAIN SPRING	1
6	N6H	HEAVY NUT, 3/4-10 GR2	1
7	N6J	NUT, HEX JAM	2
8	AP-505530	5/8 x 4 x 7 1/2 U-BOLT	2
9	LW5	5/8" SPLIT WASHER	4
10	N5	5/8-11 HEX NUT	4
11	106-B1	SET SCREW 3/4-10 X 2 SQ HEAD CUP PT	1

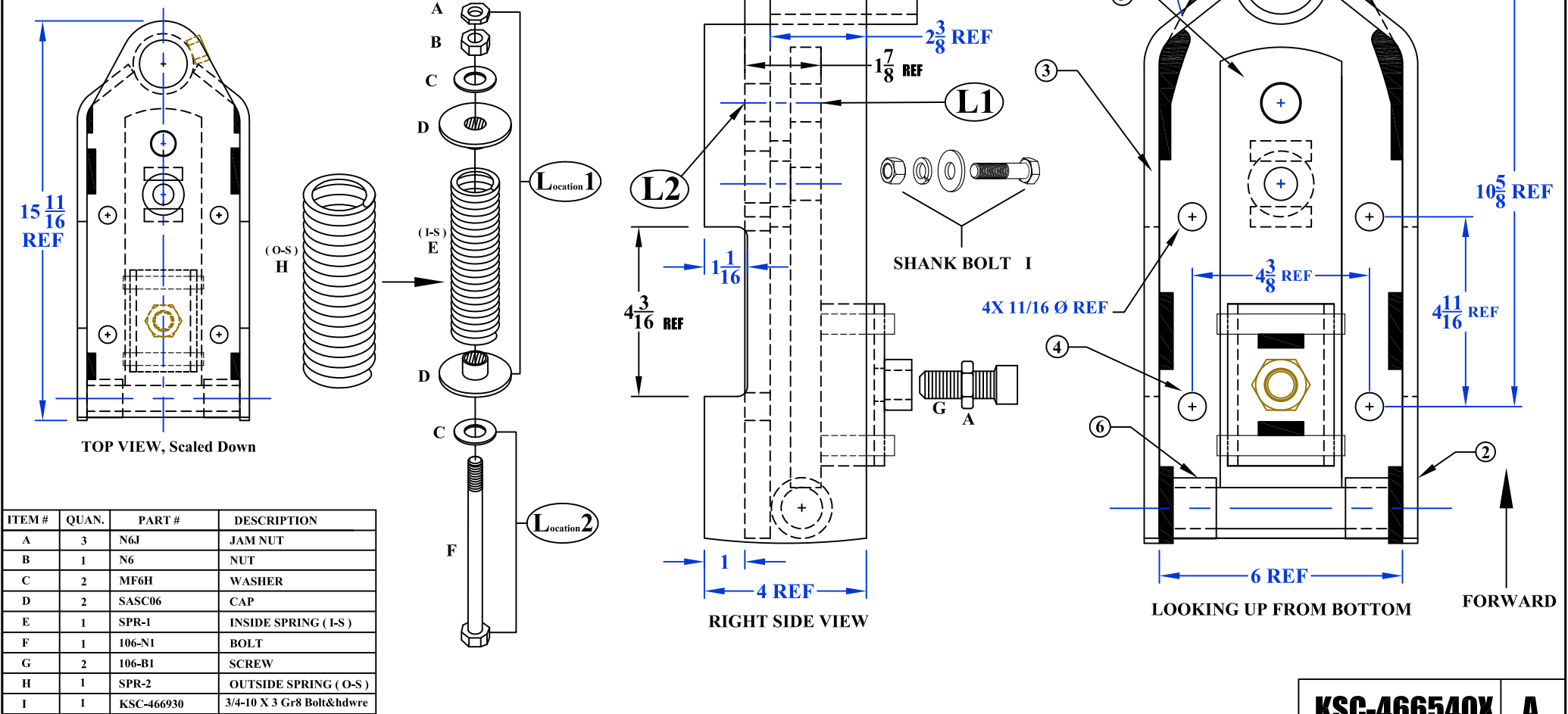


				S-1264CSL		NC			
-	-	-	-	TOLERANCE UNLESS OTHERWISE NOTED 0/0 +/- .06 0.00 +/- .020 0.000 +/- .005 0.0000 +/- .001 ANGLE +/- 1		SHIELD AGRICULTURAL EQUIPMENT			
-	-	-	-						
-	-	-	-						
-	-	-	-						
-	-	-	-						
REV.	BY	DATE	DESCRIPTION			DRAWN BY:	HURLBUT	DATE:	5/16/2013
						CHECKED BY:		DATE:	
DESCRIPTION				MATERIAL		DO NOT SCALE DRAWING		PART NO.	
CAST SPRING CLAMP FOR 6 X 4 TOOLBAR				ASSEMBLY		Weight: 44.33 LBS		S-1264CSL	
								NC	

ITEM #	QUAN.	PART #	DESCRIPTION
1	1	KSC- 466340-BMT	BAR MTG TUBE
2	1	KSC- 466540-GL	GUSSET
3	1	KSC- 466540-GR	GUSSET
4	1	KSC-466540-MP	MOUNTING PLATE
5	1	S1244SL-TW	SPRING CLAMP TONGUE WELDMENT
6	2	S1244SL-HT	1-1/2 OD X .240 WALL DOM TUBE
7	1	N6	3/4 - 10 HEX NUT

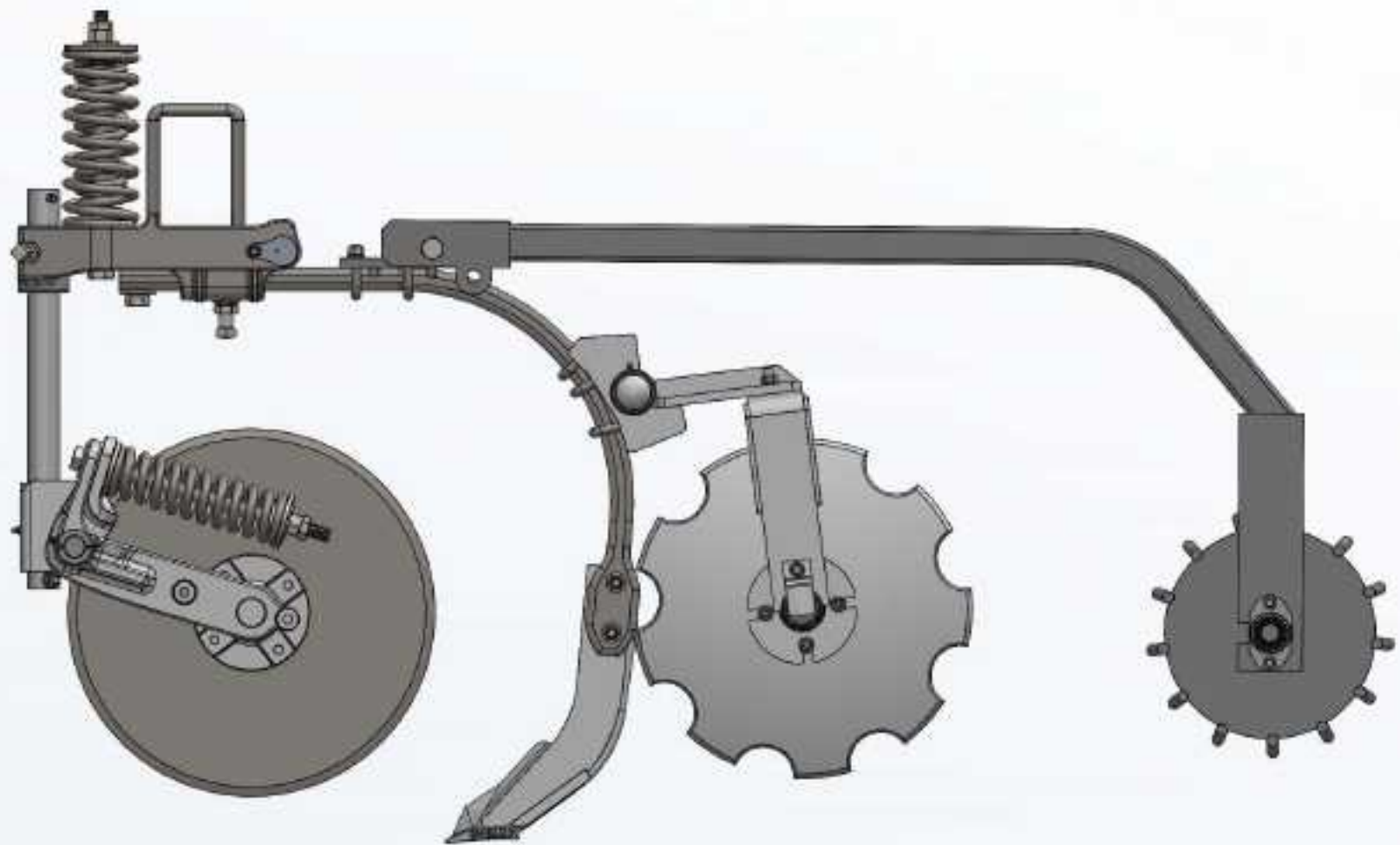
All parts here included in KSC-466540WELDFRAME

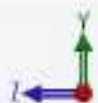
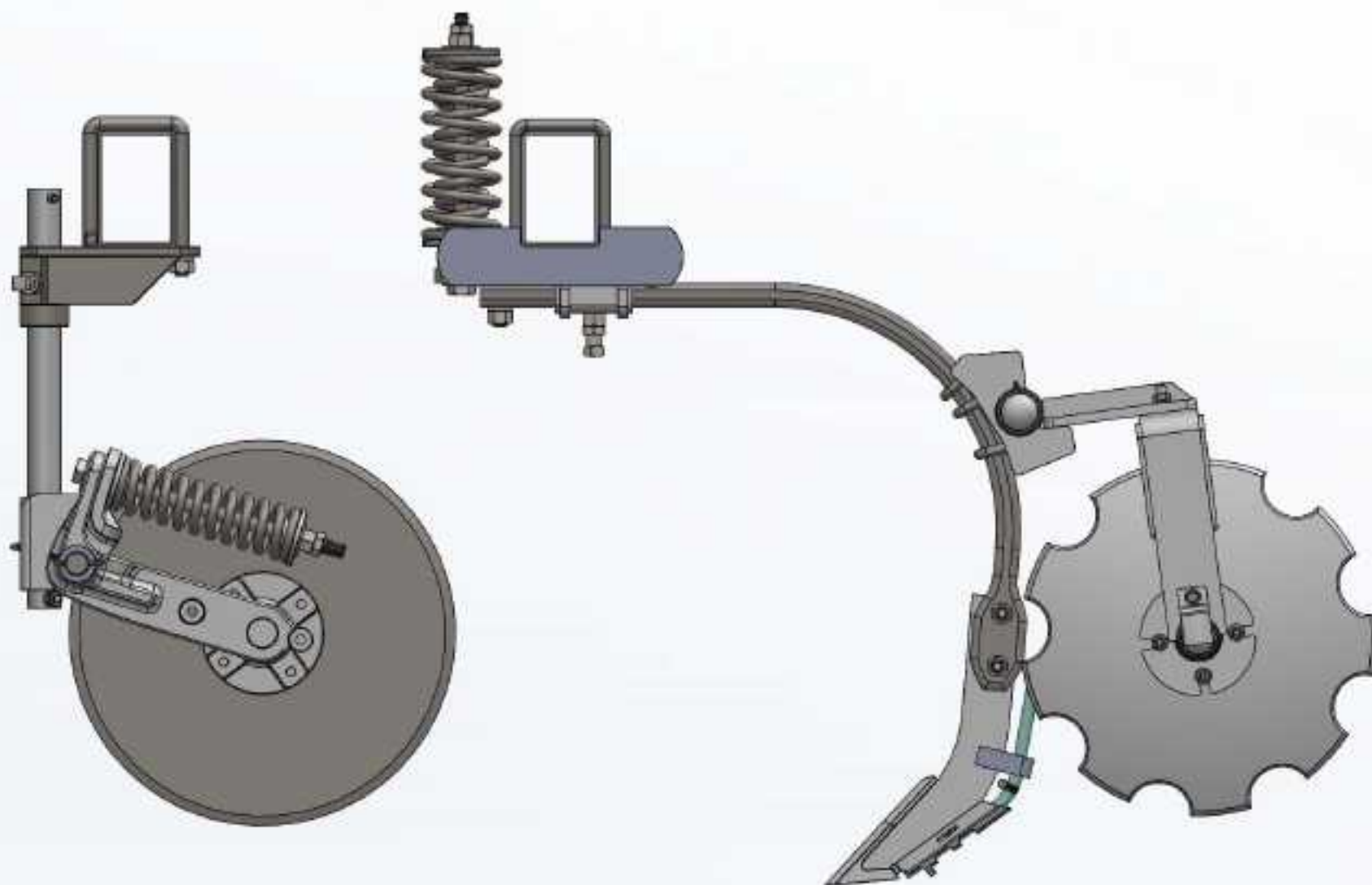
Mounting tube
for 1 3/4" shaft

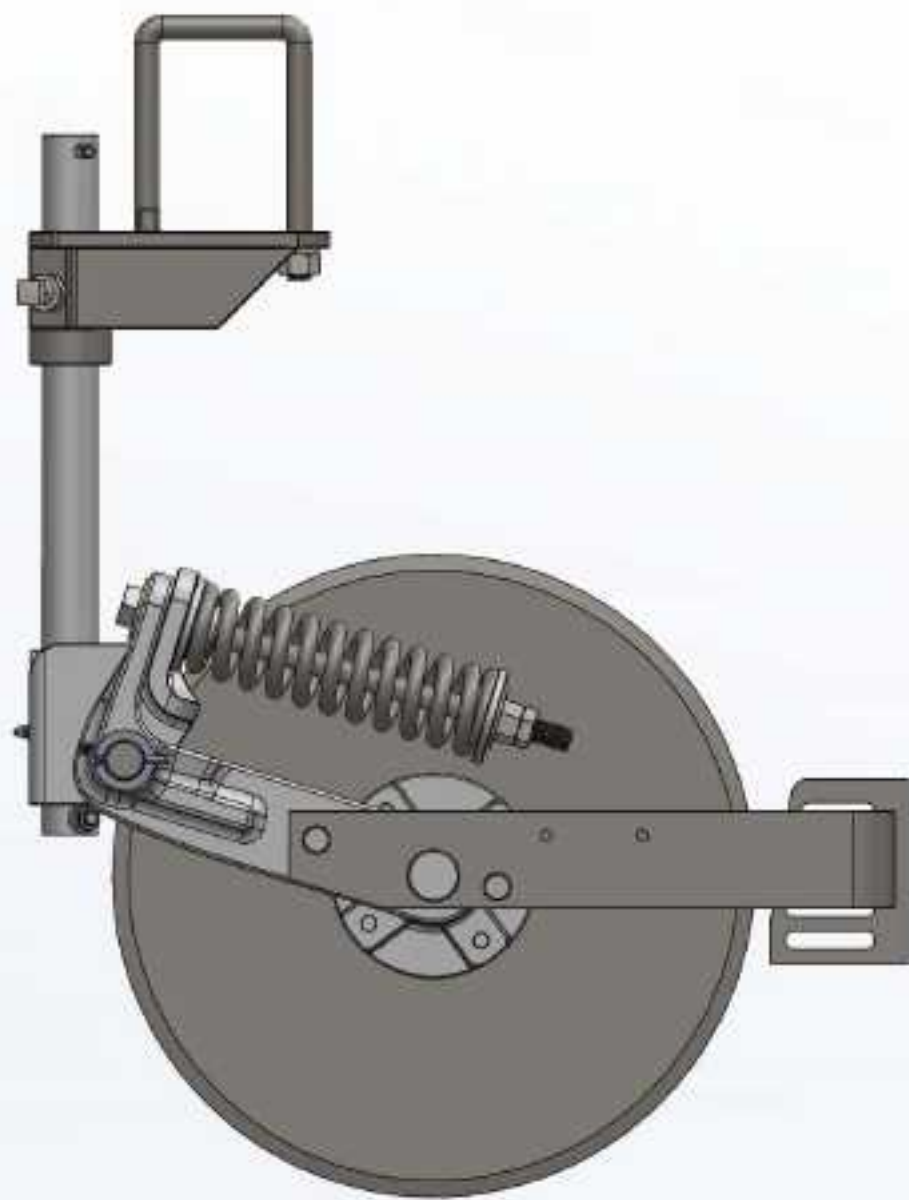


ITEM #	QUAN.	PART #	DESCRIPTION
A	3	N6J	JAM NUT
B	1	N6	NUT
C	2	MF6H	WASHER
D	2	SASC06	CAP
E	1	SPR-1	INSIDE SPRING (I-S)
F	1	106-N1	BOLT
G	2	106-B1	SCREW
H	1	SPR-2	OUTSIDE SPRING (O-S)
I	1	KSC-466930	3/4-10 X 3 Gr8 Bolt&hdwre

-	-	-	-	TOLERANCE UNLESS OTHERWISE NOTED 0/0 +/- 1/16 0.00 +/- .020 0.000 +/- .005 0.0000 +/- .001 ANGLE +/- 1/2	KSC-466540X A	
-	-	-	-		SHIELD AGRICULTURAL EQUIPMENT	
A	CS	6-1-13	Revised and redrawn		DRAWN BY: ALINK	DATE: 12/31/07
REV.	BY	DATE	DESCRIPTION		CHECKED BY: _	DATE: _
DESCRIPTION HD COULTER/SPRING CLAMP, 4 X 4 OR 6 X 4				MATERIAL WELDMENT	PART NO. KSC-466540X	REV. A







STRAIGHT FROM THE **HEARTLAND** **SHIELDAG.COM**



CALL THE DEALER **NEAREST YOU**

PHONE: (620) 662-7221 (800) 798-1968

FAX: (620) 662-7482

MAILING: PO BOX 687 • HUTCHINSON, KS 67504

SHIPPING: 950 SCOTT BLVD • SOUTH HUTCHINSON, KS 67505

