

SUBJECT: Installing ARRO Kit KK-882365 for CASEIH 3200-3400 on CaseIH 2200- & 2400-series and New Holland 98C corn heads

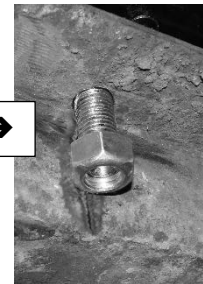
Follow the CaseIH ARRO installation instructions with THREE additional steps required:

1. CaseIH 2200- & 2400-series and NH 98C will require removal of stock rolls and stock roll housing (binoculars) and ARRO kit will include cover plate KK-882365P. If a cover plate was not included with your kit, please contact ShieldAg.

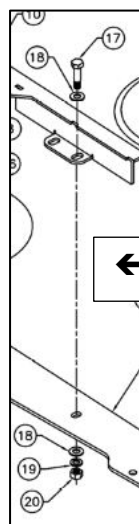


2. After marking and drilling the 2ea 16mm (or 11/16" dia) cutting disc holes (**see page 7 of the CaseIH installation guide**), use a grinder to clean up around the hole on the bottom side if it is near a weld to allow the nuts to sit flush.

You may have to grind away part of a weld near the drilled hole, shown here.



3. After a test installation of the ARRO deck plates (item 3 of the parts list) and chain guides **shown on page 11 of the installation guide**, use the ARRO deck plates as a template to drill a 9/16" or 5/8" hole through each header deck for the 1/2" bolts number 17 shown in the parts list.



← Hole is for Bolt item 17

Drill 9/16 or 5/8" hole HERE →



ARRO® is patent pending by Kopper Kutter LLC, Cimarron, KS

And distributed by ShieldAg Equipment, Hutchinson, KS 800-798-1968

www.shieldag.com